

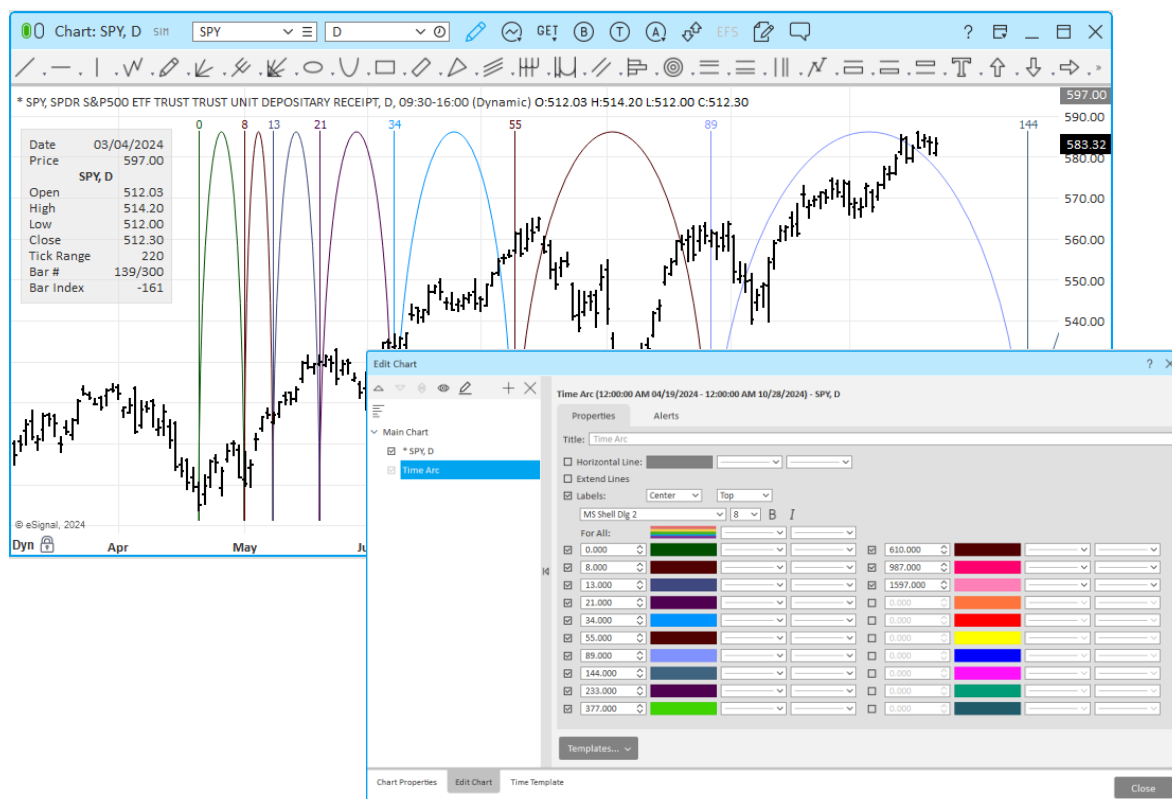
Version	Date
eSignal 21.4	January 2025

eSignal 21.4 introduces several new features and enhancements for active traders and investors. Below is a summary of these new features and enhancements together with some important bug fixes. For more detailed information about any of these please visit the [eSignal KnowledgeBase](https://kb.esignal.com) (kb.esignal.com).

Chart (including Market Profile where applicable)

- NEW Time Arc drawing tool** User Request

The Time Arc drawing tool draws vertical lines and related arcs at user defined bar intervals starting from the initial point of click.



- ENHANCEMENT Added Apply to All...Charts, Duplicate on All...Charts and Remove from All...Charts commands to the following drawing tools:** User Request

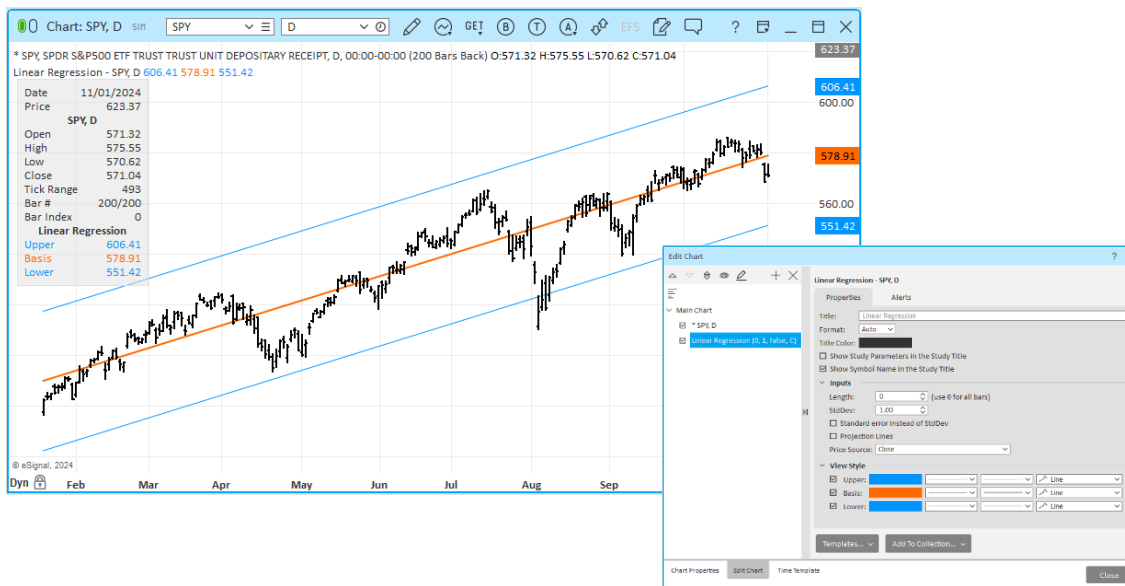
- Fibonacci Circle
- Pitchfan
- Pitchfork
- Rotated Rectangle
- Speed/Resistance
- Time Cycles

The Apply to All...Charts command will apply the selected drawing tool using the same settings to all open charts of the same symbol in the same page. These applied drawings are linked meaning that changing any one of them will also change the same drawing in all the other charts for that same symbol. The Duplicate on All...Charts is similar in behavior the only difference being that they are not linked. The Remove from All...Charts will remove the related drawings from all the charts of the same symbol where it was added using the Apply to All... or Duplicate on All... commands.

Version	Date
eSignal 21.4	January 2025

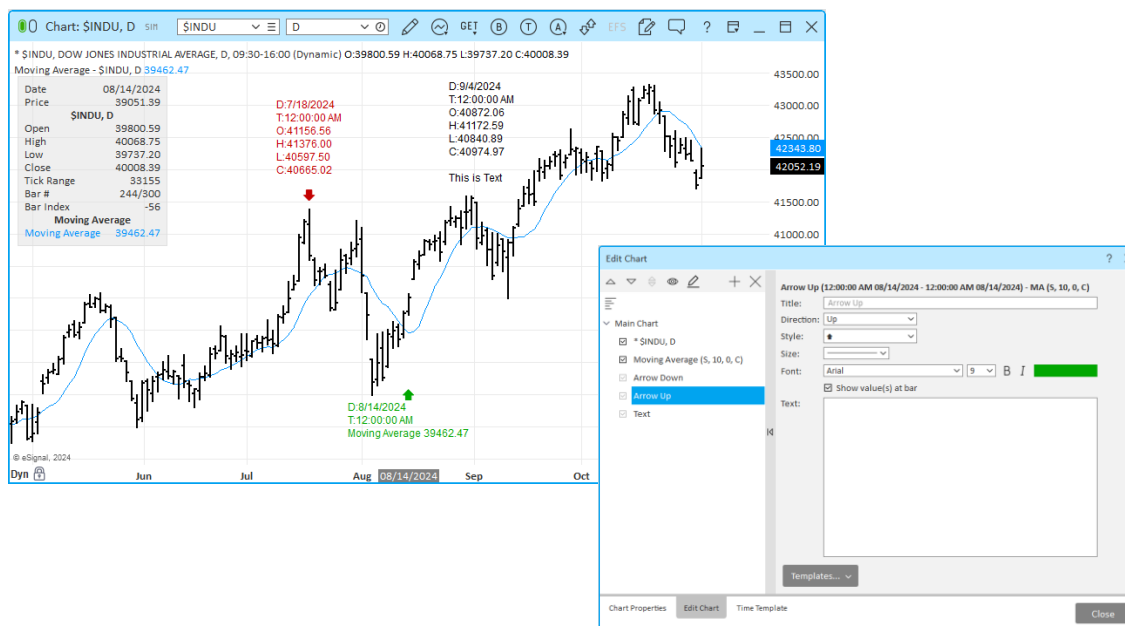
- ENHANCEMENT** Added option to calculate the Linear Regression based on all bars loaded in a Chart User Request

Users can now apply the Linear Regression tool to all bars loaded in a Chart by setting the Length of the Linear Regression to 0.



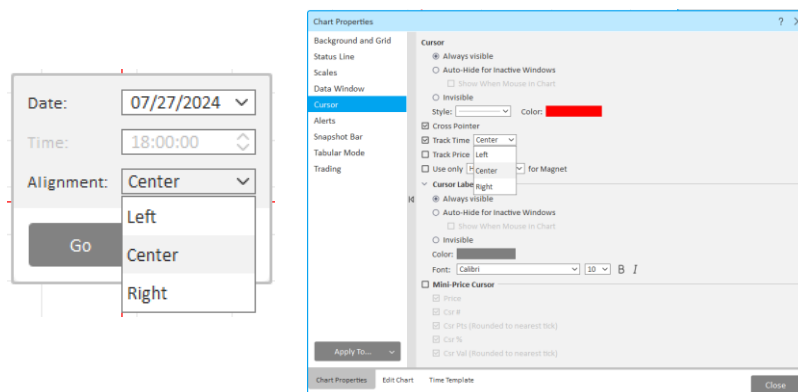
- NEW** Added option to include the Date, Time and OHLC values or study values of a bar to the Text and Arrows drawing tools User Request

Users now have the option to automatically include in the Text and Arrows (Up, Down, Right, Left) drawing tools the Date, Time and OHLC of the referenced bar or, if any one of the above drawings is applied to a study, the values for that study at the referenced bar.



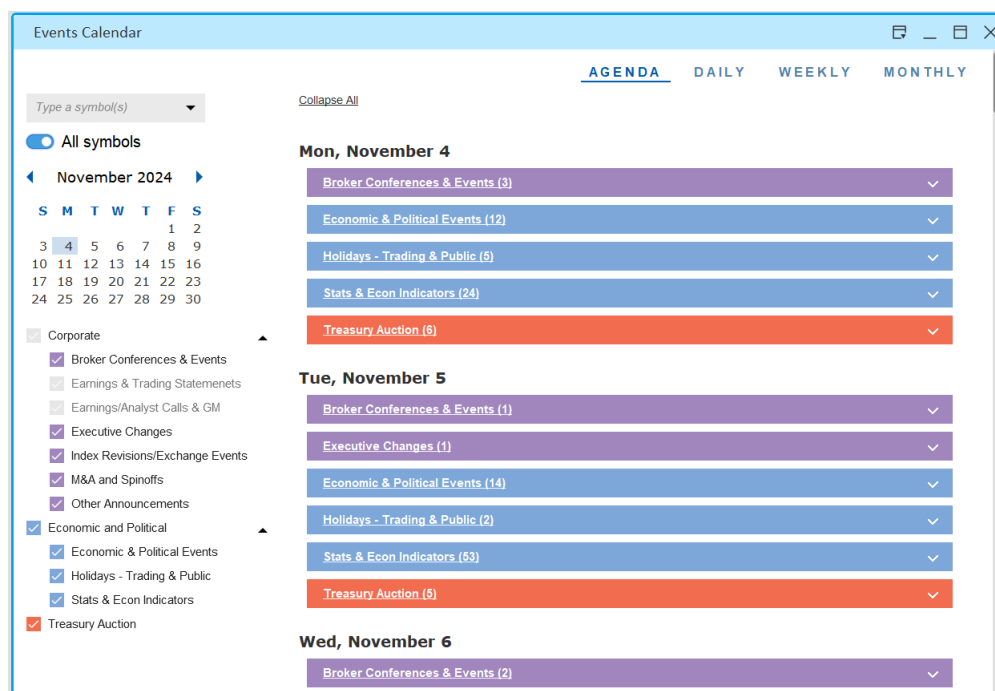
Version	Date
eSignal 21.4	January 2025

- NEW** Added option to align the referenced bar to the Left, Center or Right when using the Go To... or the Cursor Track Time functions User Request
 When using the Go To... or the Cursor Track Time functionality users now have the option to align the referenced bar of all the charts in which this function is enabled to the Left, Center or Right of the Chart.



Events Calendar

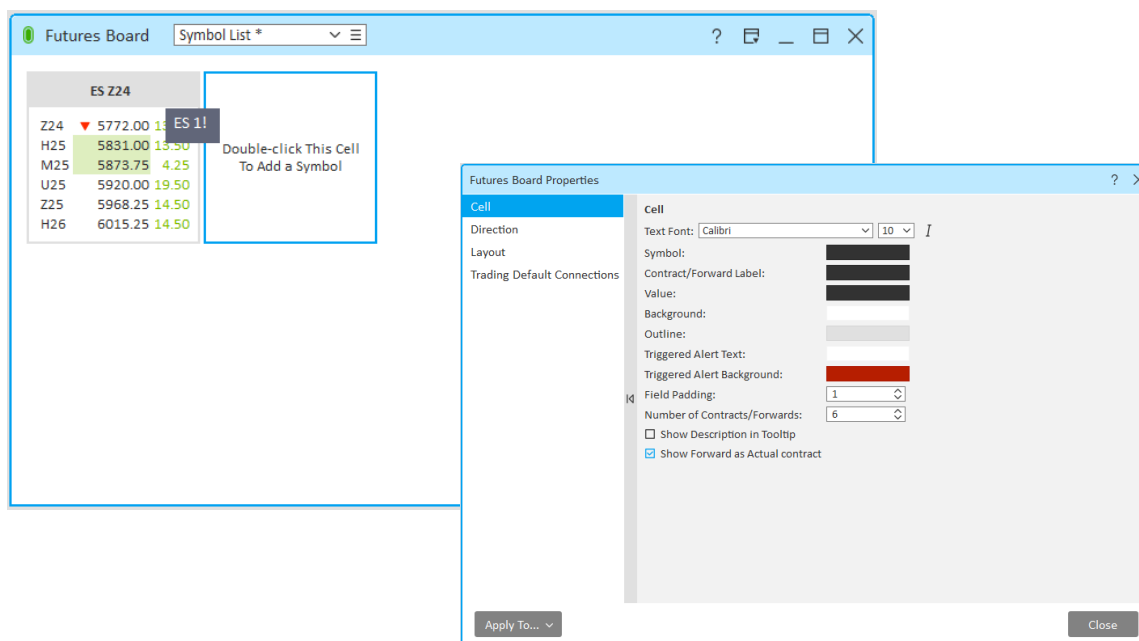
- ENHANCEMENT** Enhanced the data and workflow of the Events Calendar
 ICE has partnered with Dow Jones to offer their event coverage. The result is a major enhancement in the breadth and depth of data available in the Events Calendar, including economic data on more than 1000 events from over 55 countries, political events, market holidays, US Treasury auction events, notable C-level and management changes. Additionally, existing Events Calendar types such as Conferences, Earnings and others have also been enhanced to provide broader coverage and stronger insight. More importantly, all the data and functionality of the Events Calendar are now available to all eSignal users.



Version	Date
eSignal 21.4	January 2025

Futures Board / Quote Board

- ENHANCEMENT Added option to show Forwards as Actual contracts**
 Similarly to what can be already done in a Watch List users now have the option to display Forwards (e.g. ES 1!) as Actual contracts (e.g. ES Z24).



Other Enhancements and Fixes

- Updated Rithmic plugin.
- The last used Chart Memo settings are now saved between eSignal sessions. *User Request*
- The labels of Order(s) and Position(s) can now be disabled in the Chart Price Scale. *User Request*
- Enhanced the look of the Candlestick wick when the Show Thin Wick option is disabled. *User Request*
- Enhanced the GUI of the filter panel of the Manage Alerts dialog.
- After entering a symbol in the Quote Ticker symbol box, the symbol now remains highlighted making it easier for users to enter a new symbol without having to backspace in the symbol box.
- Fixed an issue where buttons drawn on a Chart by EFS were not drawn in the appropriate color.
- Fixed an issue where the XTL Breakout indicator lines would not display the lines correctly after setting (or resetting) its defaults.
- Fixed an issue where the mouse cursor would remain in Drag and Drop mode even after an order was executed and where subsequent attempts to use Drag and Drop on any other order would cause an application assert.
- Fixed an issue where the labels for Splits were not displayed correctly in a Chart.
- Other minor enhancements and fixes.