

| | |
|-----------------------|--------------|
| Version | Date |
| eSignal 12.8 Update 1 | January 2018 |

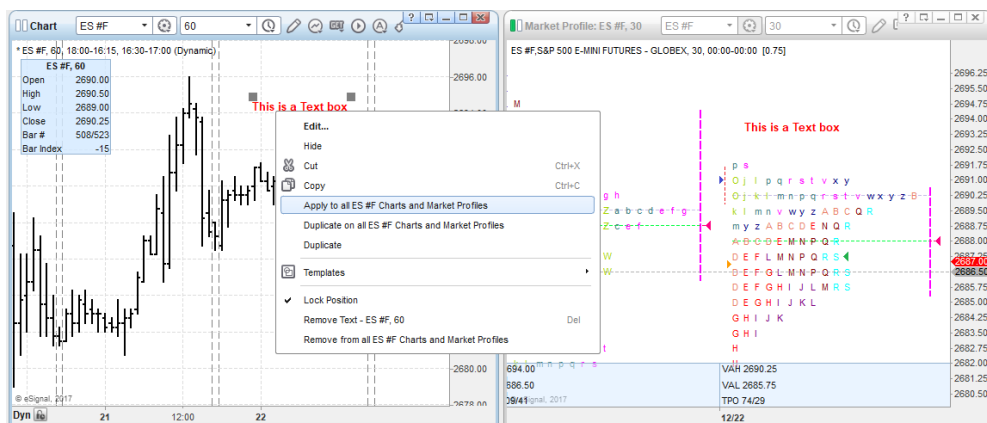
eSignal 12.8 Update 1 introduces several enhancements for active traders and investors. Below is a summary of the enhancements and important bug fixes. For more detailed information about any of these features please visit the [eSignal KnowledgeBase](http://kb.esignal.com) (kb.esignal.com).

Enhancements

The following list highlights the major enhancements introduced in eSignal 12.8 Update 1

Chart / Market Profile

- Added option to apply Text and Arrows to all charts and sub-charts of the same symbol**
 In addition to being able to statically “Duplicate” the Text and Arrows on all other Charts and/or Market Profiles of the same symbol (similarly to what can be done with some other drawing tools) users can now also dynamically “Apply” them to all other Charts and/or Market Profiles of the same symbol. In this case the drawings are linked and synchronized in real time to each other.



Chart

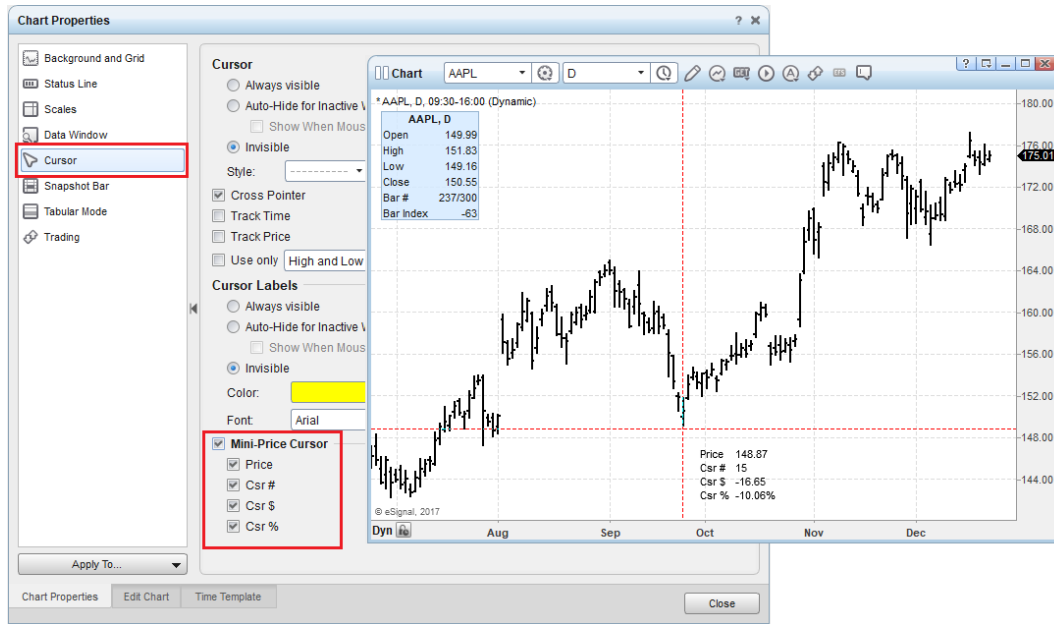
- Added Cursor statistics to Data Window**
 Users now have the option to display the Cursor statistics within the Data Window. These statistics display the number of bars (Csr#), the point change (Csr\$) and the percentage change (Csr%) between the last click on the chart and the current position of the Cursor. Any one of these can be easily added to or removed from the Data Window either through the Data Window’s Properties or context menu, using hotkeys or custom toolbar commands.



| | |
|-----------------------|--------------|
| Version | Date |
| eSignal 12.8 Update 1 | January 2018 |

- **Added Mini Cursor with Cursor statistics**

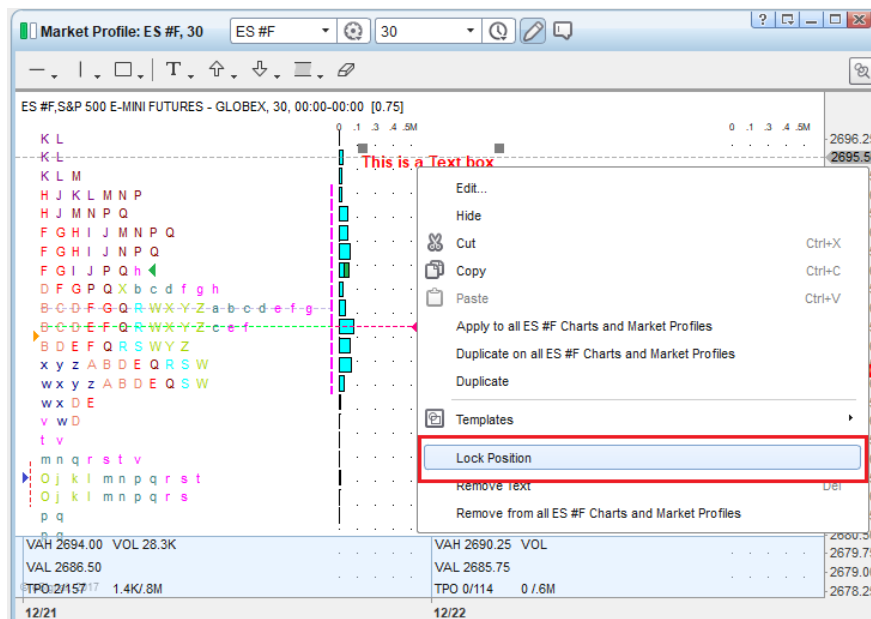
Users now have the option to also display the Cursor statistics in a Mini Cursor that is displayed alongside the Cursor. The Mini Cursor is easily enabled through the Cursor Properties or using a hotkey or a custom toolbar command.



Market Profile

- **Added Lock Object option to Text and Up/Down Arrow drawing tools**

Users now have the option to lock the position of the Text and Up/Down Arrow drawing tools in the Market Profile Chart.



| | |
|-----------------------|--------------|
| Version | Date |
| eSignal 12.8 Update 1 | January 2018 |

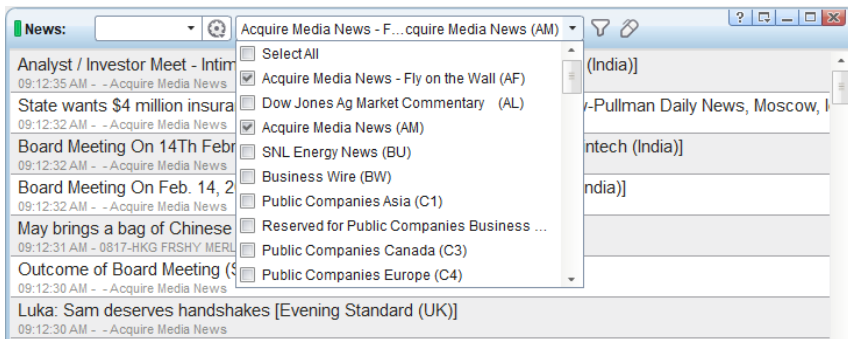
News

- **Added Acquire Media news service**

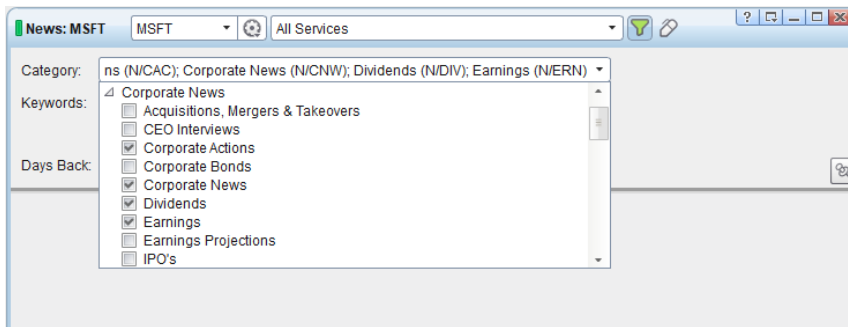


- **Enhanced Services, Categories and filter functionality**

It is now possible to select one or more or all Services in the News window (previously the choices were only one or all)



In addition, the Categories displayed in the dropdown filter are now based on the selected Service. Also, they are now sorted alphabetically - thereby making them easier to find - and it is now possible to select multiple Categories without having each selection collapse the dropdown filter.



Other Enhancements and Fixes

- Optimized the performance in the opening of the Local Data Storage dialog.
- Enhanced the Auto Scale mode in the Chart where it can now be disabled simply by pressing the Up/Down Arrow keys.
- Added font selector to Highlight drawing tool.
- Added Style Templates to various Built-in Studies.
- Fixed an issue where the symbol list of the Local Data Storage was not being updated.
- Fixed an issue where the application desktop could overlap the Windows taskbar.
- Fixed an issue where the Volume study template was not being saved.
- Fixed an issue where the Trend Line or the Vertical Line could terminate the application when added to a Chart running some studies.
- Fixed an issue where Expressions and Conditional Formatting were not working correctly with EFS.
- Fixed an issue where alerts generated by the Parabolic study were not functioning in a Watch List.

| | |
|-----------------------|--------------|
| Version | Date |
| eSignal 12.8 Update 1 | January 2018 |

- Fixed an issue in the Advanced GET Dashboard where the gauges were not resizing proportionately to the font.
- Fixed an issue where the Gain Today and %Return Today fields in a Portfolio could return an incorrect value.
- Fixed an issue where the Open PL, Gain Today, PL Today and %Return Today could change their values when closing a position.
- Fixed an issue where the Market Maker column sort arrow could appear disabled in the Market Depth window.
- In Arps Crown Jewels added Arps Radar1 Fear-Greed, Arps Radar2 Price-Leader Acceleration Oscillator, Arps Radar4 Normalized Pitch and Arps RangeFinder Intraday studies and updated Arps Price Magnets – DN and Arps Price Magnets – UP studies.
- In EZ2 Trade Collection updated all studies.
- Other minor enhancements and fixes.