

Version	Date
eSignal 12.10	December 2018

eSignal 12.10 introduces several new features and enhancements for active traders and investors. Below is a summary of the new features, enhancements and important bug fixes. For more detailed information about any of these features please visit the [eSignal KnowledgeBase](http://kb.esignal.com) (kb.esignal.com).

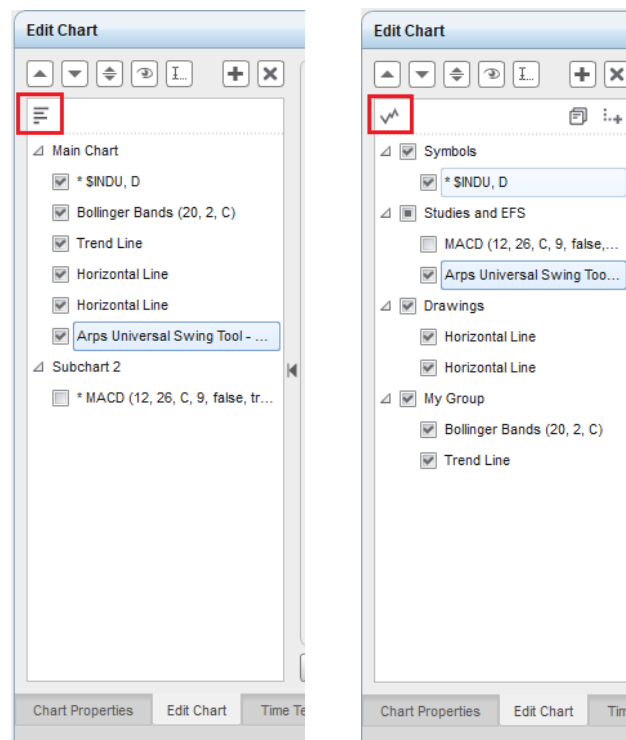
New Features and major enhancements

The following list highlights new features and major enhancements introduced in eSignal 12.10

Chart

- **Added List View to Edit Chart**

In Edit Chart we have now added a new List View that allows the user to list and control the visibility of all the objects in a chart [e.g. studies, drawings, etc.] grouped by Symbol, Type or any user defined group. In the images below, you can see on the left the traditional Chart View tree and on the right the new List View tree. Highlighted in red in both images is the control button that allows switching between the views.



Built-in Studies

- **Intraday Volume Profile**

The Intraday Volume Profile study provides a visual representation of the distribution of trades across each trading day by taking the volume and comparing it against price. In addition, the study highlights the Value Area and plots the High Volume and the Value Area High and Low levels for each trading day.

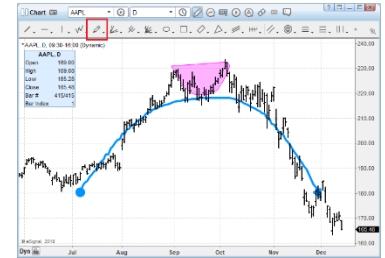


Version	Date
eSignal 12.10	December 2018

Drawing Tools

- **Pencil**

The Pencil is a freehand drawing tool that allows the user to draw any figure on the chart. Like with the Polyline the drawn figures can be "closed" automatically by the application and the background can be filled.



- **Left/Right Arrow**

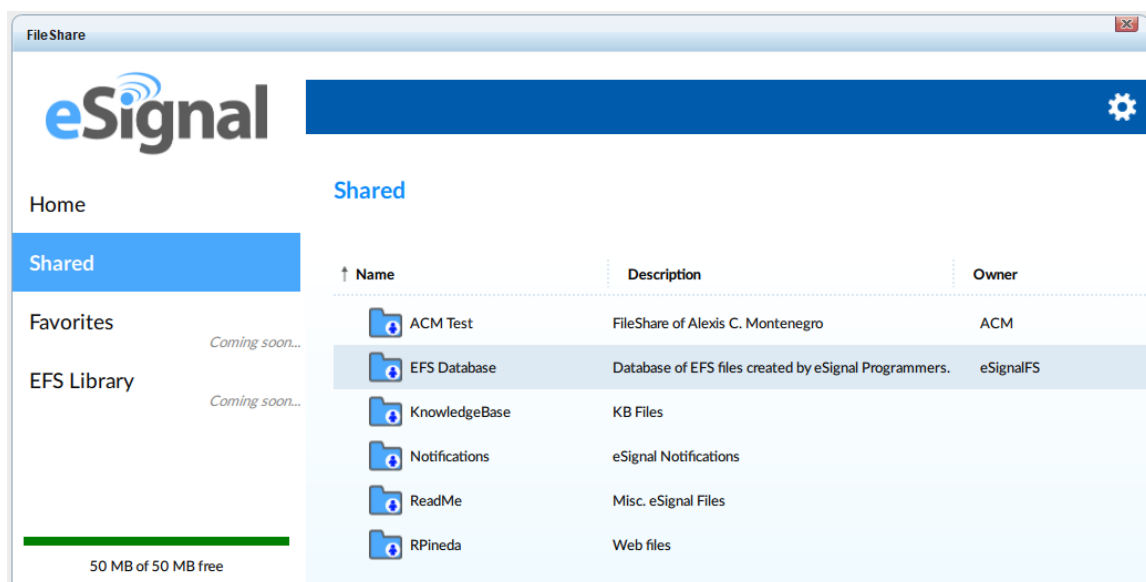
We have now added also Left/Right Arrows to complement the Up/Down Arrows that were already available.



FileShare

Starting with eSignal 12.10 users will now be able to share their folders with other users and view folders shared by others. Folders can be shared either publicly or with specific users. Users will also be able to assign specific credentials to other users with whom they are sharing (e.g. Administrator, Member, Read Only, etc.). As of this version we have also restored all the existing shares and credentials that were in place prior to launching the new FileShare.

Additionally, we have now decoupled the development of FileShare from that of the application so that any further enhancements to FileShare can be implemented without the need of a new release.

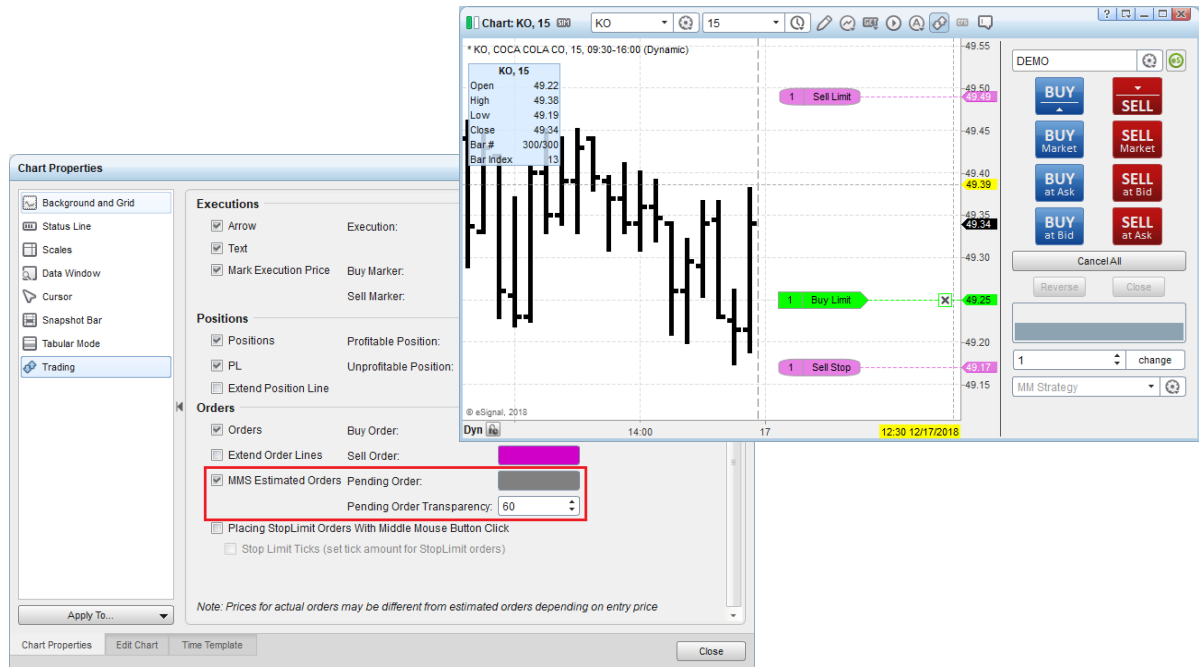


Version	Date
eSignal 12.10	December 2018

Trading ^{RT}

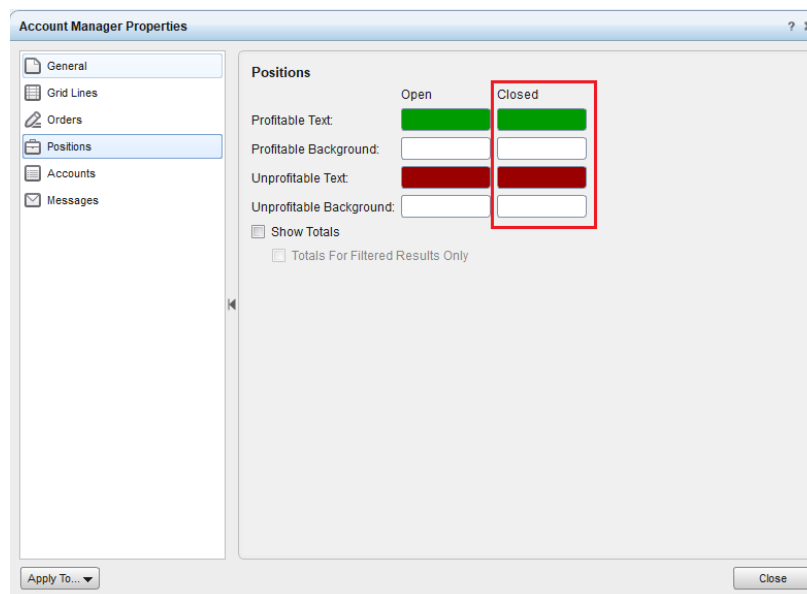
- **Strategy Orders preview**

Users now have the option to preview the Strategy Orders on the Chart and in the Trade Manager without having to wait for the entry order to be executed.



- **Added option to color Closed Positions in Account Manager**

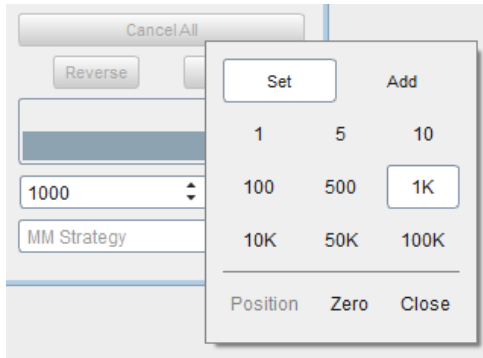
In addition to being able to color Open Positions users now have the option to distinctly color Closed Positions in the Account Manager.



Version	Date
eSignal 12.10	December 2018

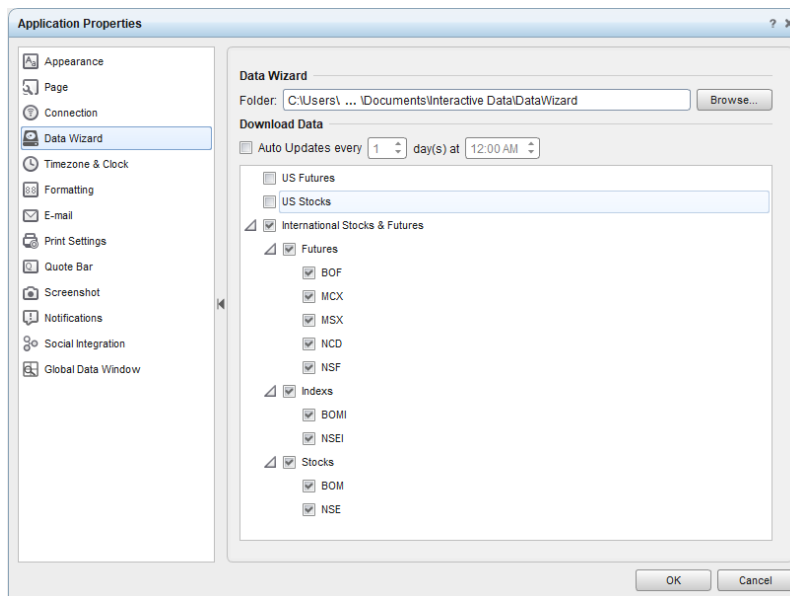
- **Enhanced the Order Quantity dialog**

Users now have the option to select whether the Order Quantity will Set the selected quantity or Add to the existing Quantity.



Data Wizard [EOD](#)

Users can now individually select which of the currently available International exchanges and or types of securities they wish to download.



Version	Date
eSignal 12.10	December 2018

Other Enhancements and Fixes

- Enhanced the overall responsiveness of the application by implementing a direct connection to the servers. Note that although the application no longer makes use of the Data Manager this is still being included with the installer for use with Options Analytix and third-party applications.
- Added to EFS the *isTabularMode()* function to allow a formula to detect if the Chart has been set to Tabular Mode.
- Added a Countdown for Tick and Price Change chart intervals.
- Added font settings to the Alerts Log.
- Added hotkeys for the Cursor and Cursor Label.
- Fixed an issue in the Volume Delta Price Stat study where it would include in the current day only the most recent session on symbols with multiple sessions.
- Fixed an issue in intraday Heikin-Ashi chart type where the time stamps could be incorrect.
- Fixed an issue in the Time Frame Selector where the intraday time frames were not displayed correctly.
- Fixed an issue where the Pre-Market Settings would not apply to the Percent Change field.
- Fixed an issue in the Chart where the tooltip of a Label [e.g. Earnings, Dividends, etc.] would cover the time scale Cursor label.
- Fixed an issue in Account Manager where the Totals were not fully visible with larger fonts.
- Fixed an issue where a minimized window could shift when restored.
- Fixed an issue where the Stop Limit Ticks could return 0 when a connection was changed.
- Fixed an issue in the Watch List and Dashboard where the Auto Sort state and time settings could be reset when sorting columns.
- Fixed an issue where the symbol could not be changed when the title bar was hidden.
- Other minor fixes.

Notes:

RT – Real Time version only.
EOD – End Of Day version only