

Version	Date
eSignal 12.15	December 2020

eSignal 12.15 introduces several new features and enhancements for active traders and investors. Below is a summary of the new features, enhancements and important bug fixes. For more detailed information about any of these features please visit the [eSignal KnowledgeBase](https://kb.esignal.com) (kb.esignal.com).

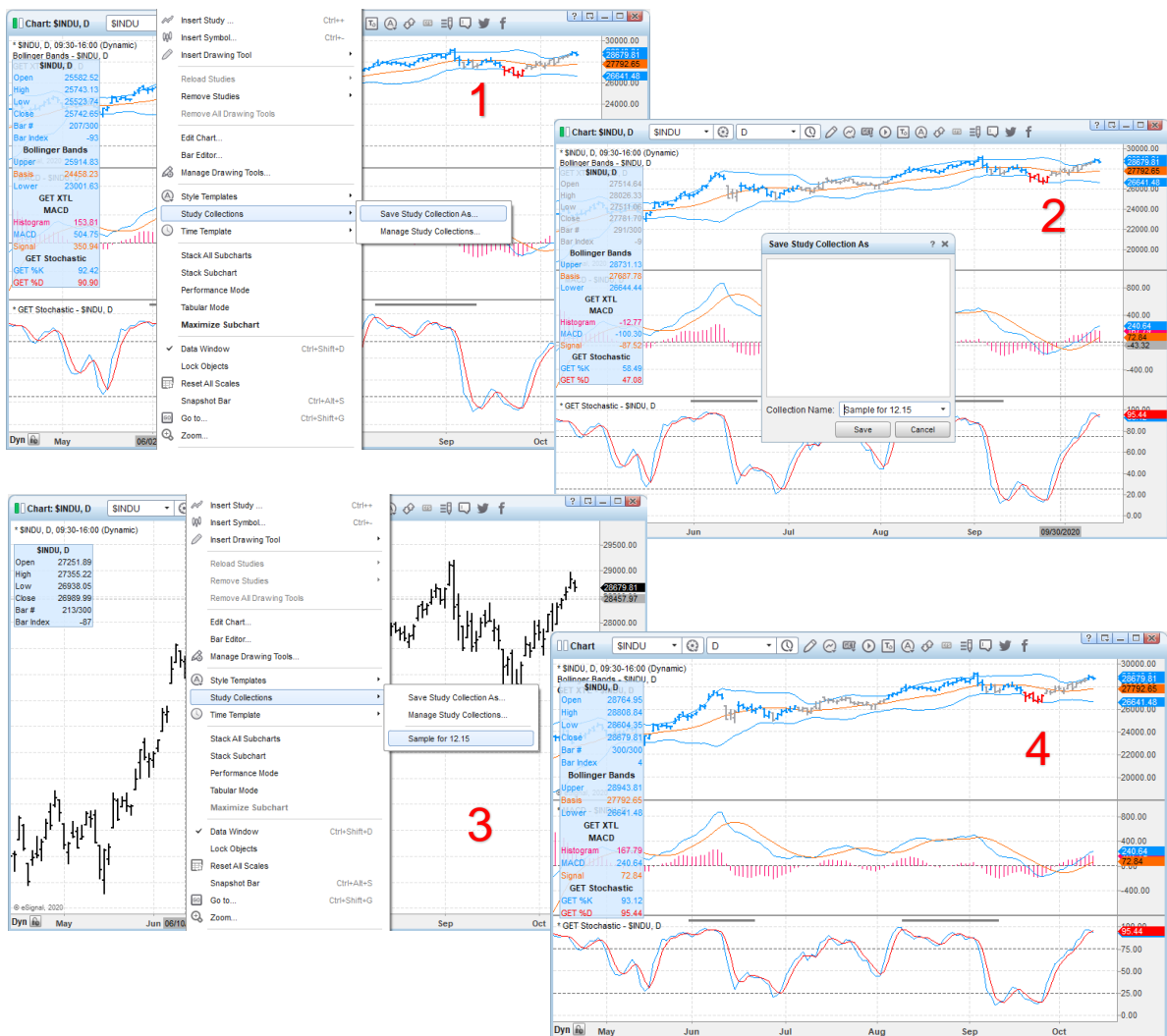
## New Features and major enhancements

The following list highlights new features and major enhancements introduced in eSignal 12.15

### Chart

- Study Collections**

Users can now select any one or all the studies running in a chart and save those selections as Study Collections that can be subsequently applied directly to any other chart without affecting any of its settings or properties.



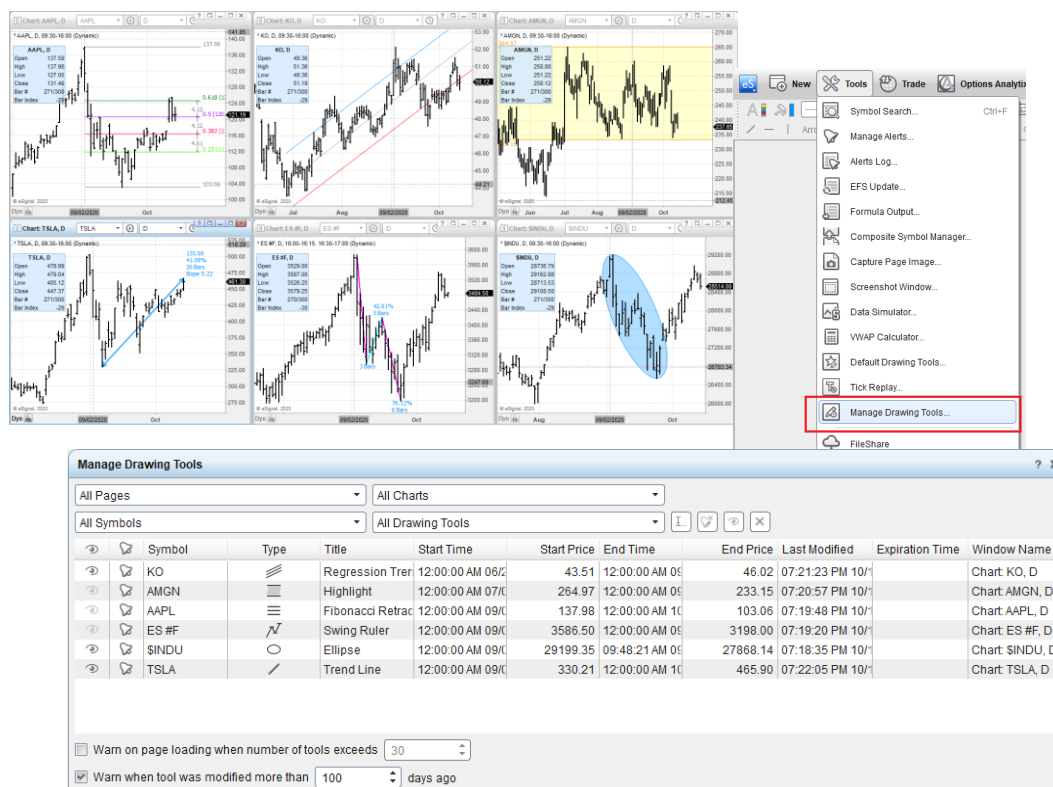
Version	Date
eSignal 12.15	December 2020

### • Manage Drawing Tools

In 12.15 we have centralized the Manage Drawing Tools dialog - that was previously specific to each individual chart – into a single global dialog available under the Tools menu.

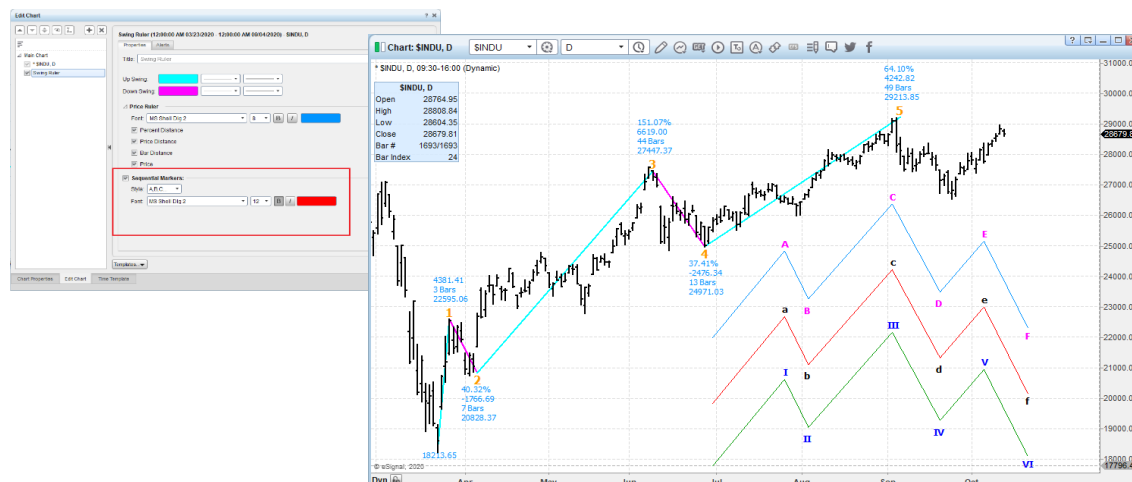
This way users can manage all of their drawing tools from a single location rather than having to do so from each chart.

Coupled with the global Manage Alerts introduced in 12.11 this enhancement now offers unprecedented flexibility in the use of the application.



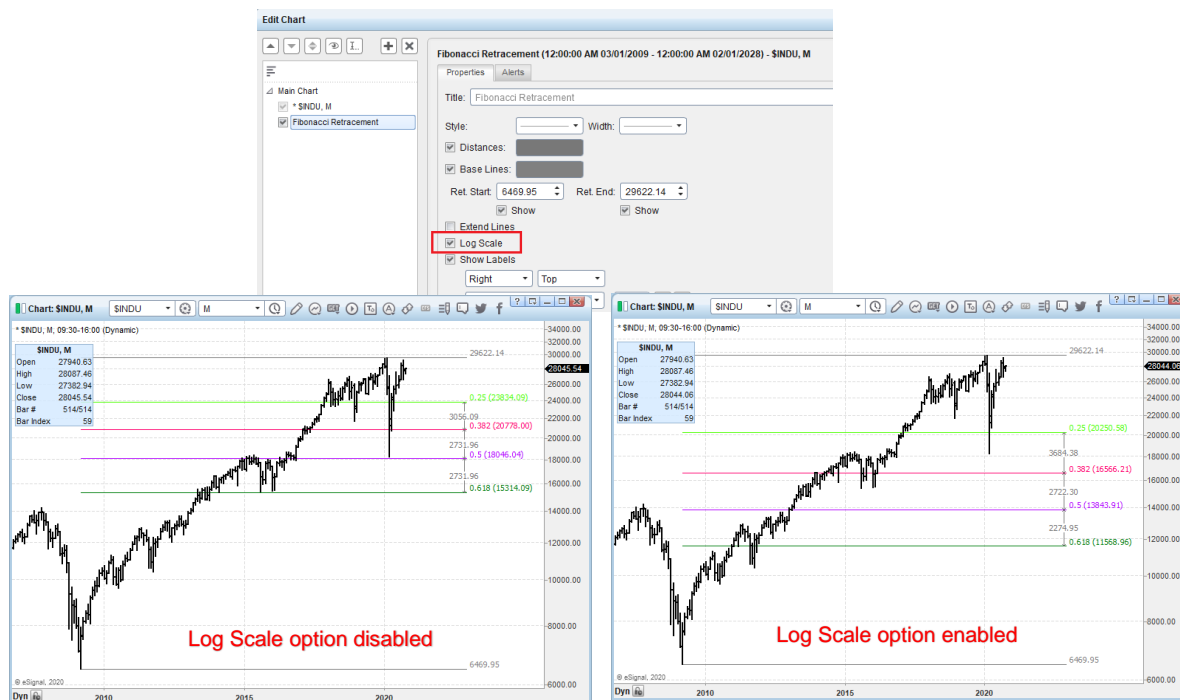
### • Added Sequential Markers to Polyline and Swing Ruler drawing tools

This feature allows users to add a sequential notation (letters, numbers or roman numerals) to the turning points of the Polyline or the Swing Ruler drawing tools.



Version	Date
eSignal 12.15	December 2020

- Added option to draw Fibonacci Retracement and Extension based on Log Scale  
This feature allows users to draw the Fib Ret and/or Fib Ext basing it on the Log Scale.



- Added option to place all drawings on top of the price series  
This feature allows users to place all drawings at the top of the z-order of the chart by default rather than having to individually move them in Edit Chart.

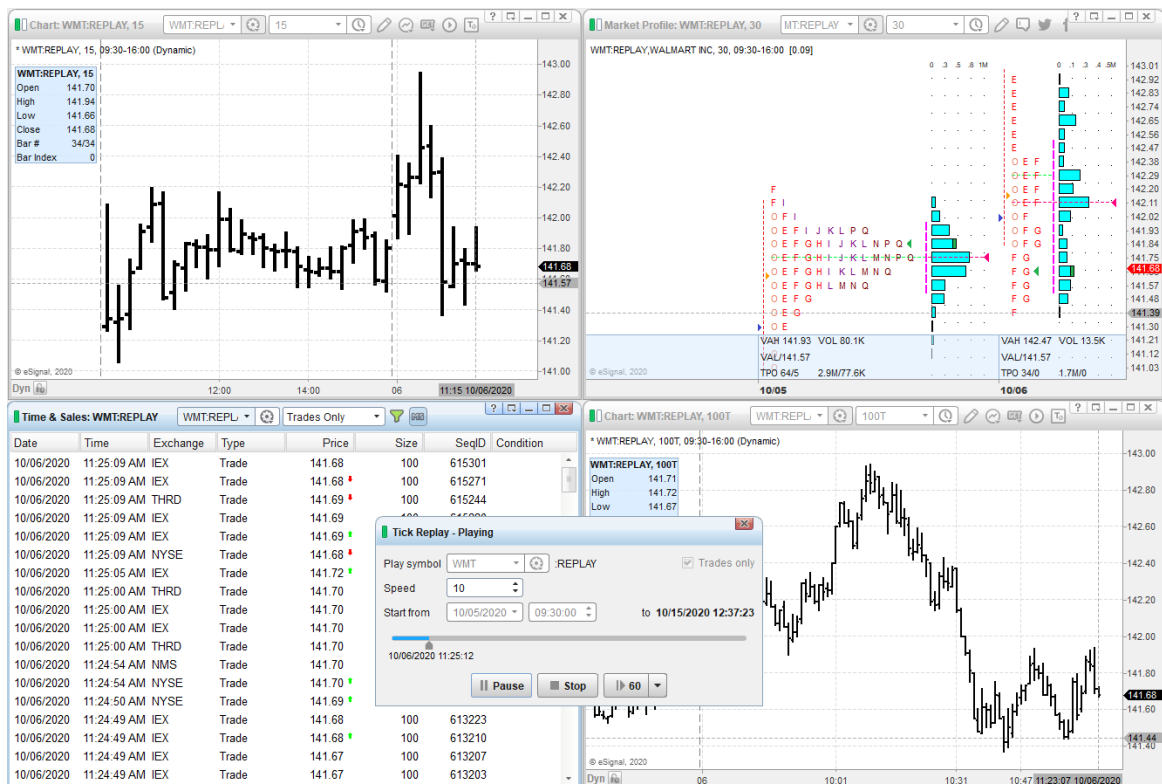
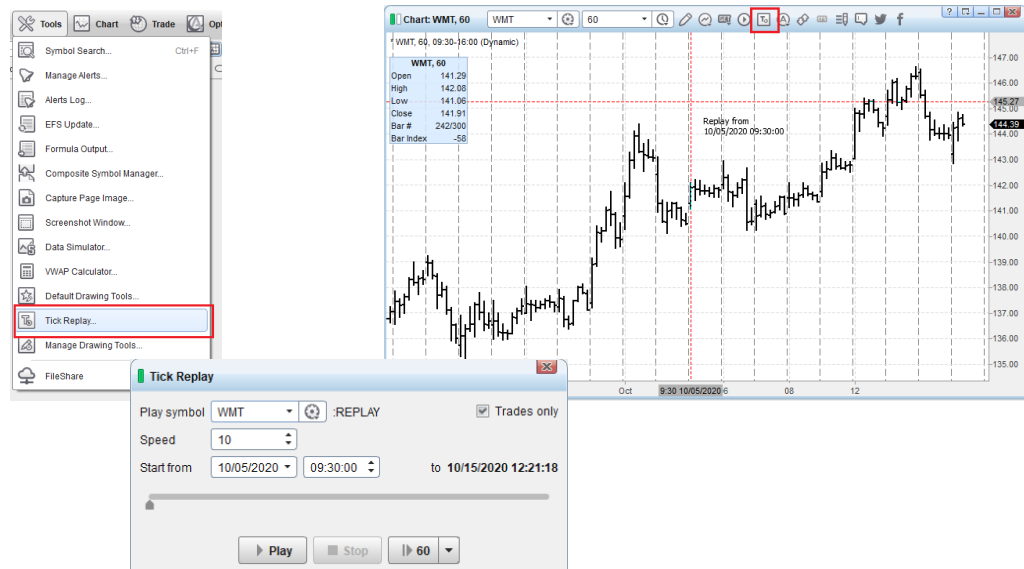


Version	Date
eSignal 12.15	December 2020

## Shell

- Tick Replay**

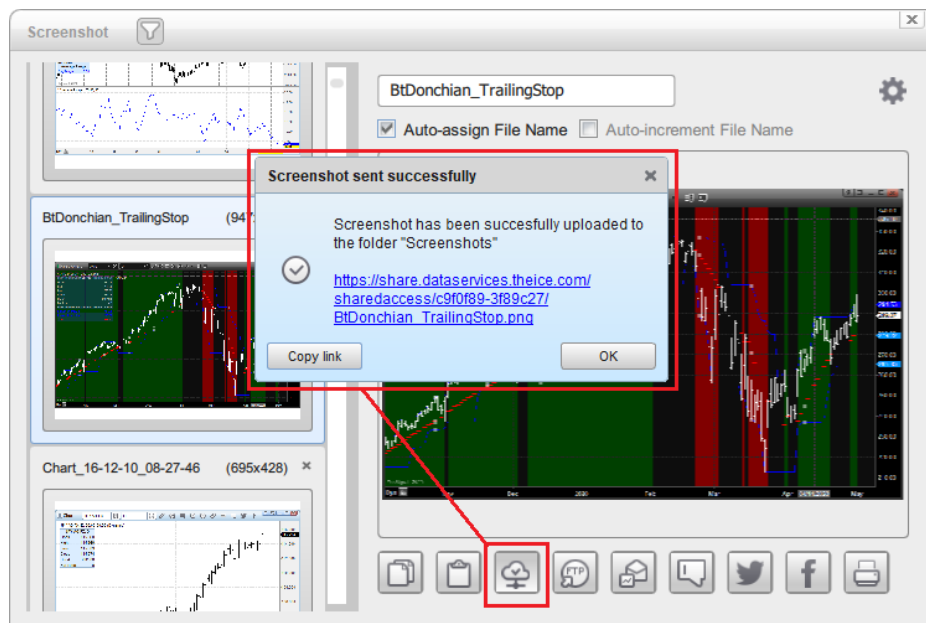
This tool allows a user to replay a symbol on a tick by tick basis concurrently on one or more charts and/or Market Profile charts of any interval and T&S. Users can start Tick Replay either from the Tick Replay dialog available under the Tools menu or directly from within a chart.



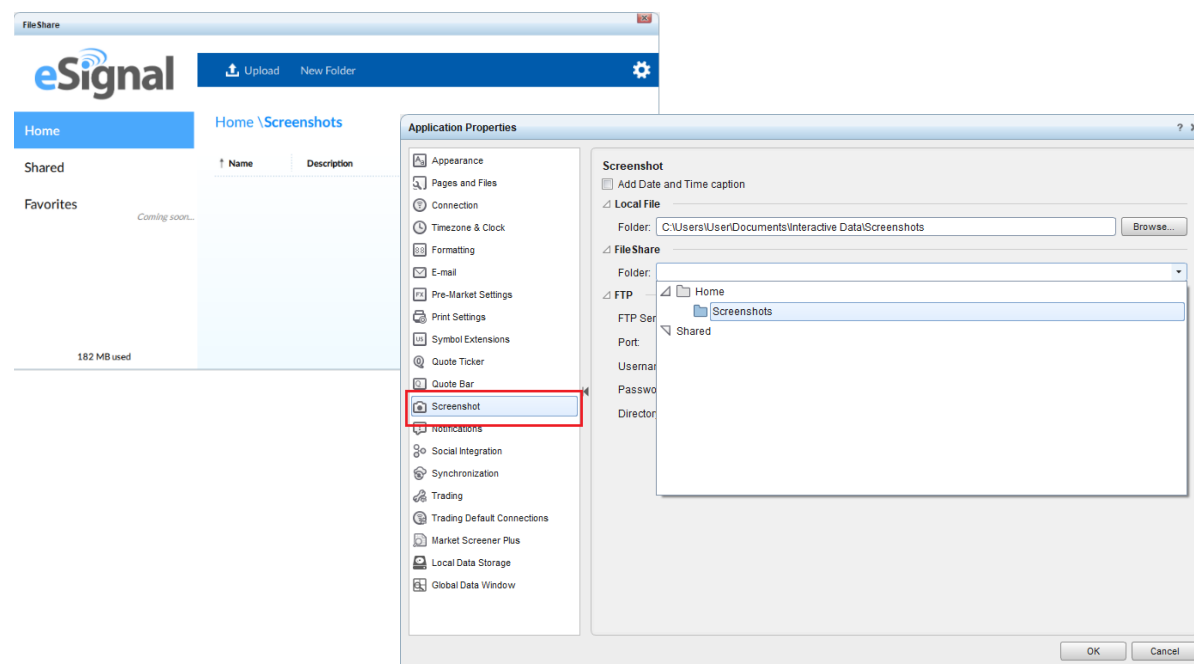
Version	Date
eSignal 12.15	December 2020

- **Screenshot**

Users can now directly upload and save to FileShare any image that they capture using the Screenshot tool. In the process the application will also instantly create in FileShare and display in the application the related links.



The uploaded images are saved by default in the Screenshots folder – located in the user's Home folder - that is created when first launching this new functionality. However, users will be able to change the destination folder to one of their choosing through the Properties of the Screenshot tool.



Version	Date
eSignal 12.15	December 2020

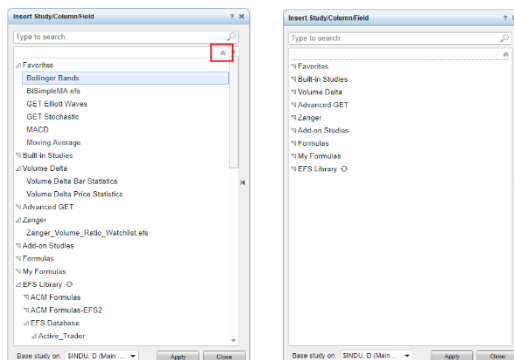
- **Enhanced the Insert Study/Column/Field dialog**

The Insert Study/Column/Field dialog (originally introduced in 12.14 as Add Object and since renamed) has been enhanced in both content and appearance.

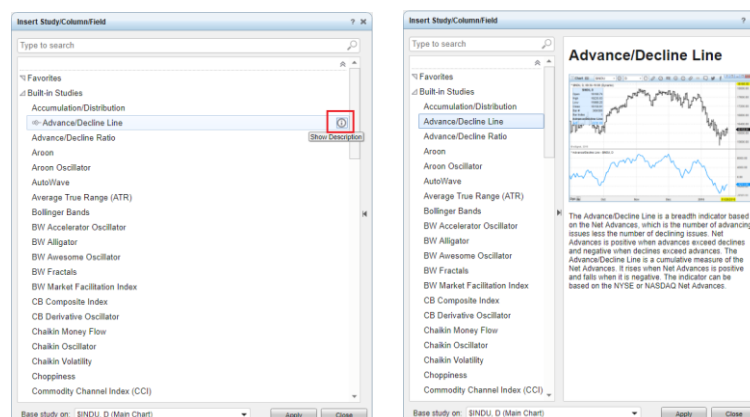
We have now added a Favorites group to which users can now easily and quickly add any of these objects so as to make them instantly available at the top of the list. This is accomplished using the same “pin” method employed elsewhere in the application (Symbol Search, Recent Files, etc).



We have also added a Collapse All button so as to make it easy for a user to collapse the list of objects.



Also, we have added a marker alongside each object that has any additional information related to it. Clicking on the marker will open the slide panel to display the related information.



Version	Date
eSignal 12.15	December 2020

- **Enhanced the combo box drop-down list**

The drop-down lists in all the combo boxes used throughout the application have been enhanced and now will dynamically adjust so as to always display the full content of the listed items.

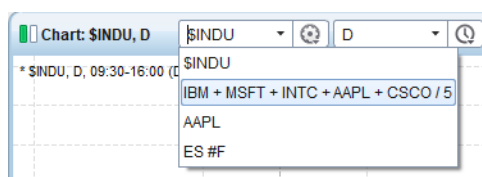


Chart in 12.15

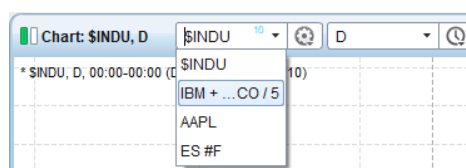
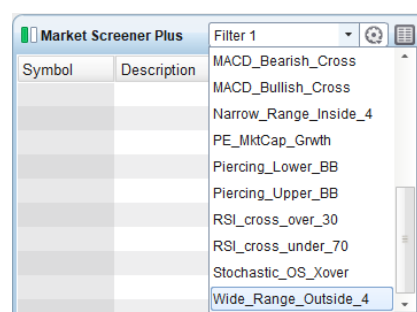
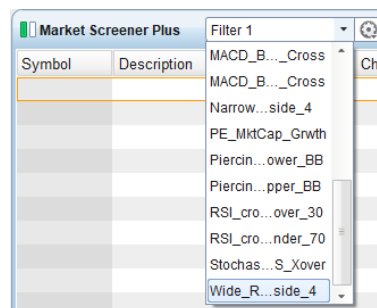


Chart in 12.14



Market Screener Plus in 12.15



Market Screener Plus in 12.14

## **Other Enhancements and Fixes**

- Updated Options Analytix.
- Enhanced the Media window.
- Enhanced FileShare.
- Enhanced the Synchronization functionality.
- Enhanced the Chart with the addition of a color for Unchanged bars.
- Enhanced the Detailed Quote window whereby the Change% and Trade Time fields in the Big Price section are now proportionally sized respect to the Price field.
- Enhanced the Price Alerts dialog whereby the Accept button is now always visible without the need of scrolling to the end of the dialog.
- Enhanced the Order Ticket whereby it can now be collapsed to a smaller size.
- Enhanced all dialogs whereby they will always be repositioned on the application's main screen if for any reason they were outside of the desktop's viewable area.
- Added a context menu command to remove any item from the Symbols/Headers dropdown list (same as that already available in the Symbol dropdown list).
- Fixed an issue in the Market Depth window whereby it would not display the Net Order Imbalance with some symbols.
- Fixed an issue in the Insert Study/Column/Field dialog whereby an EFS would at times not be displayed in the list.
- Fixed an issue where an EFS could not be edited from a Watch List.
- Fixed an issue with Order Designer where the Stop Price was missing for Stop/Limit orders.
- Fixed an issue in IB plugin whereby it could return an invalid P/L value with specific symbols.
- Other minor enhancements and fixes.