

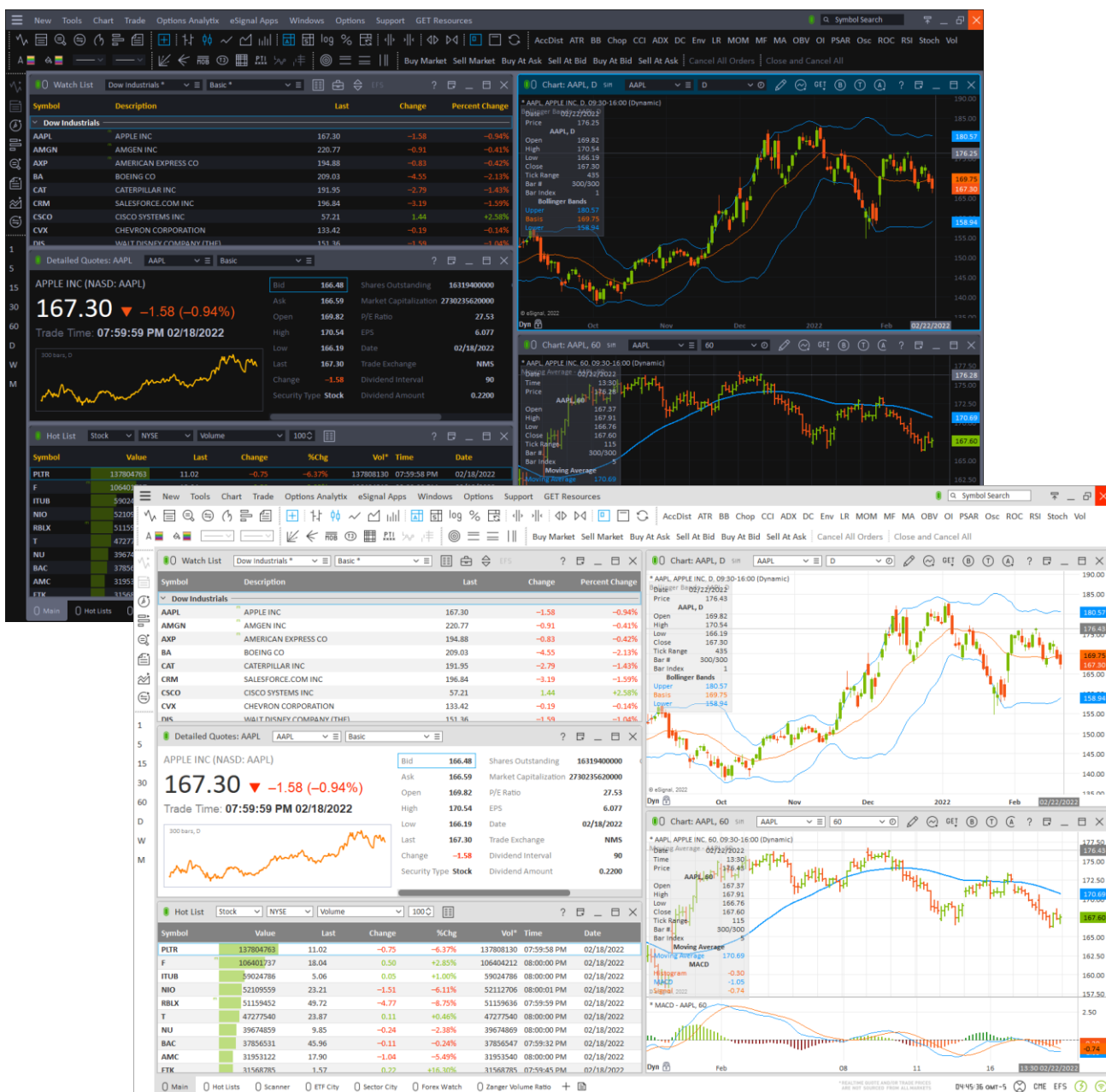
Version	Date
eSignal 21.1	March 2022

eSignal 21.1 introduces several new features and enhancements for active traders and investors. Below is a summary of the new features, enhancements, and important bug fixes. For more detailed information about any of these features please visit the [eSignal KnowledgeBase](http://kb.esignal.com) (kb.esignal.com).

eSignal 21.1 – We Refine the Fresh New Look

In version 21.1 we further refined across all windows and dialogs the redesign of the graphical interface of eSignal so as to offer a modern and fresh experience that is visually more intuitive and provides better focus on the tasks at hand.

In addition to the new look, we also continued refactoring the codebase with the result of improving the application's overall performance and efficiency while preserving its functionality.



Version	Date
eSignal 21.1	March 2022

Chart

- Cycles GET**

The Advanced GET Cycles study calculates the primary cycle based on the user defined time frame and then projects it both backwards - so as to allow the user to evaluate its correlation to the underlying data - and forwards - so as to predict potential future behavior.



- Arc User Request**

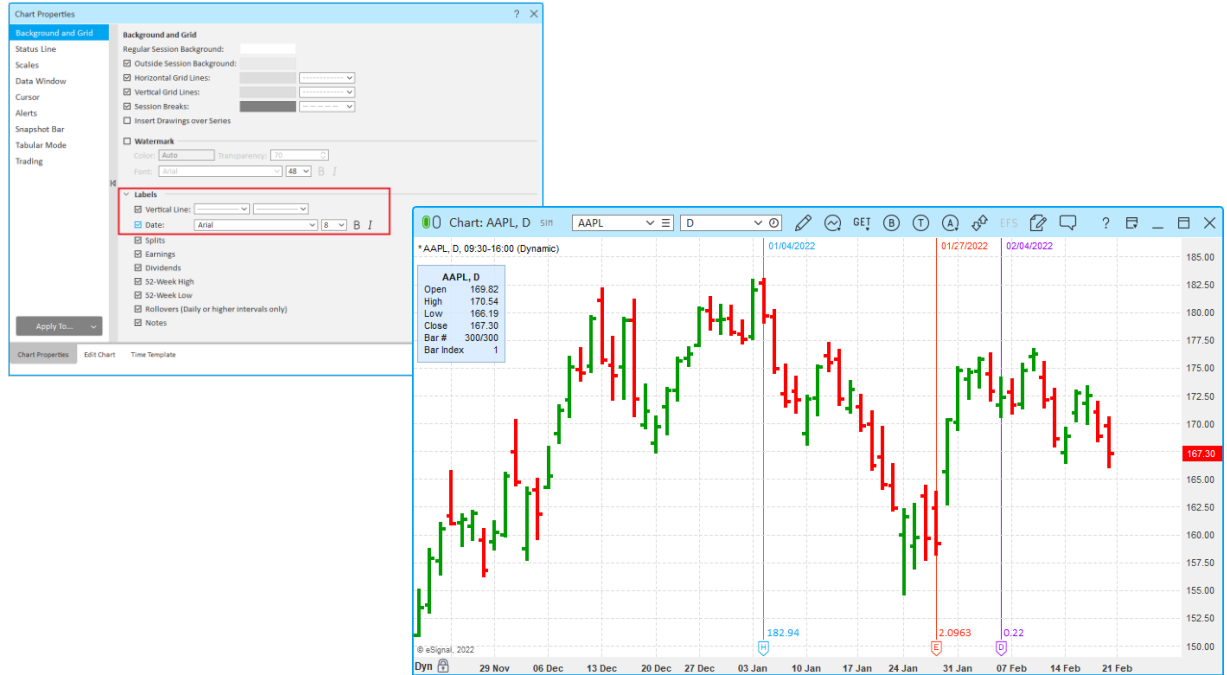
This new drawing tool allows the user to draw an Arc in a chart. Similarly to some other drawing tools available in eSignal the area surrounded by the Arc can be left open ended or it can be closed and filled.



Version	Date
eSignal 21.1	March 2022

- Labels User Request**

In addition to updating the look of all the chart Labels we enhanced them with the option of adding a corresponding vertical line and date so as to better identify the bars on which the events occurred.



- Notes User Request**

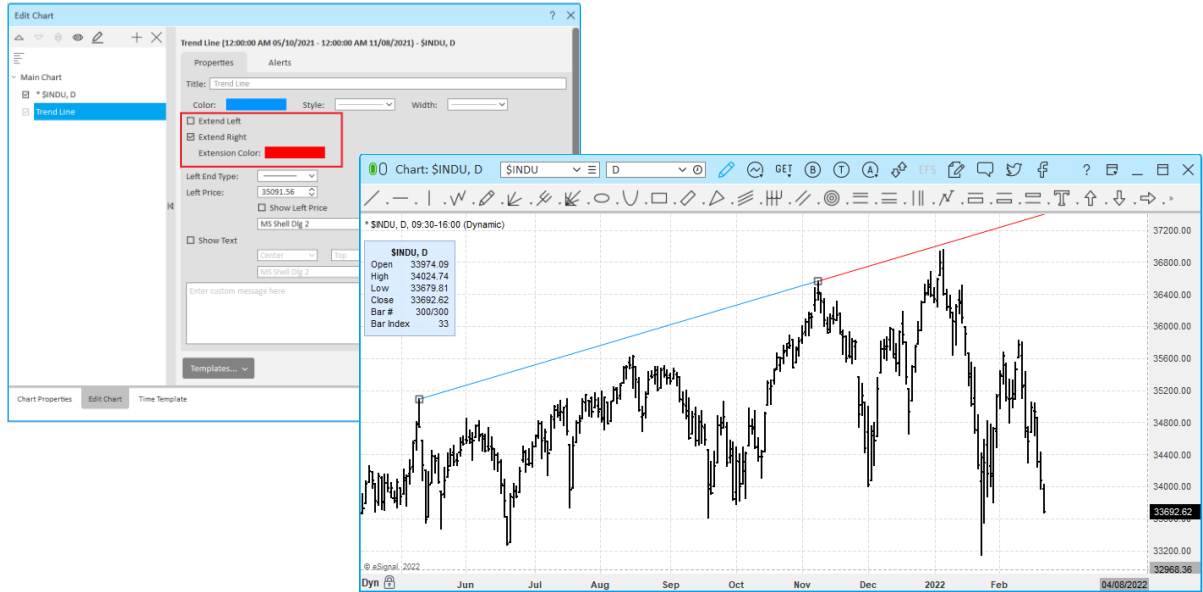
The font and color of the text in the chart Notes can now be individually user defined and the corresponding labels will display in the chart in the same color as that of the text. When hovering on the Label the Tooltip will also display the text in the selected font and color.



Version	Date
eSignal 21.1	March 2022

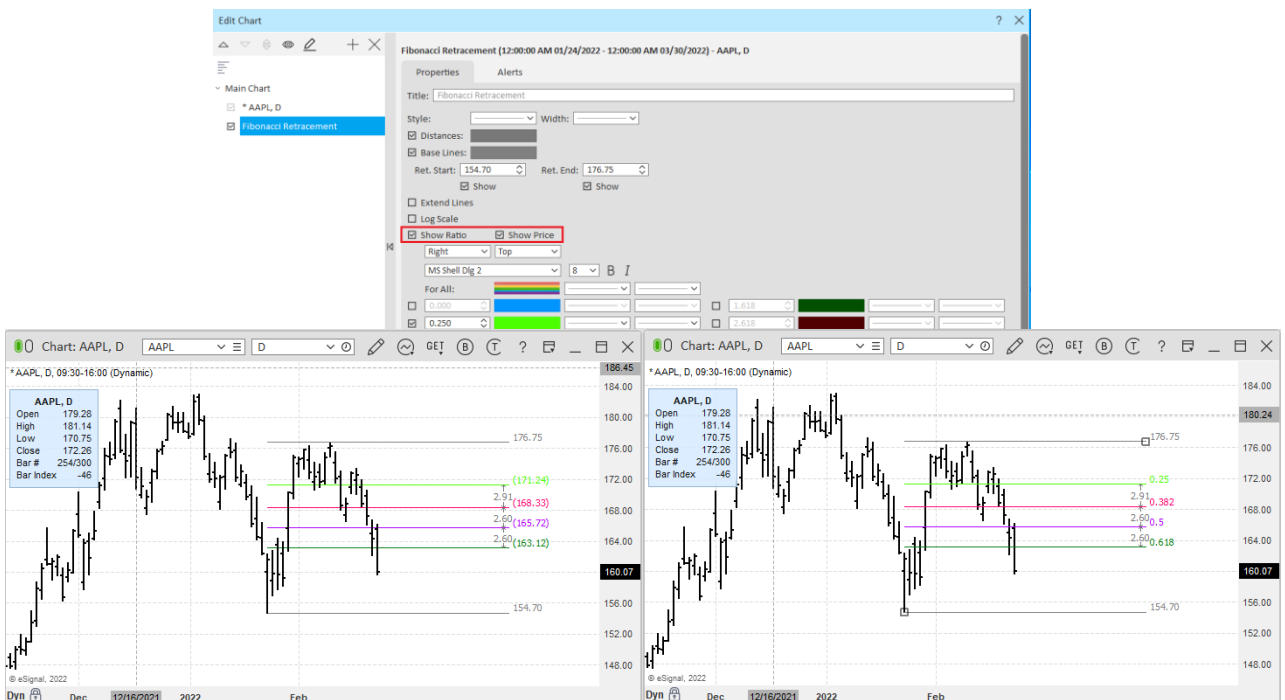
- Trendline User Request**

We added an option to paint the Right/Left Extension of a Trendline in a color different than that of the Trendline.



- Fibonacci Retracement/Extension User Request**

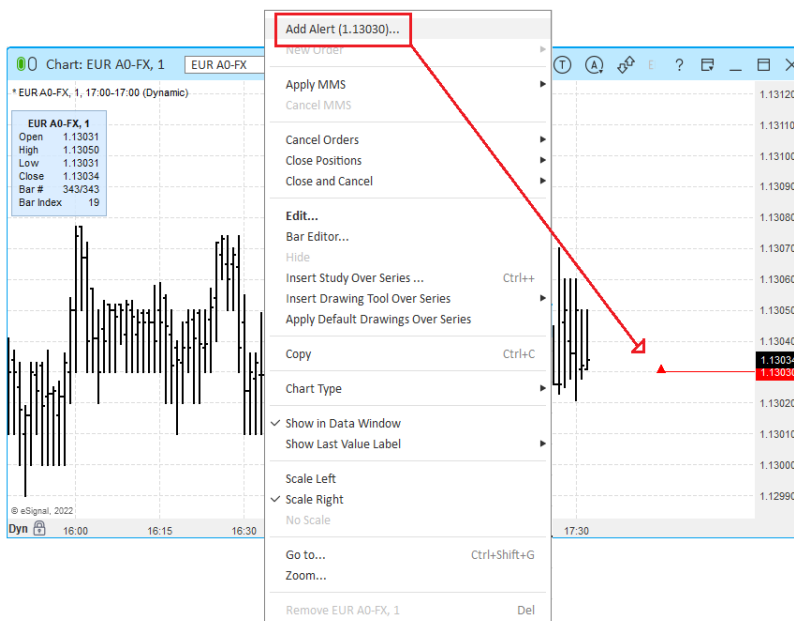
We added the option to individually display or hide the Price and Ratio values.



Version	Date
eSignal 21.1	March 2022

• **Alerts** User Request

When right clicking a chart and selecting Add Alert from the context menu the default alert is now instantly applied to the chart at the selected level without opening the corresponding dialog thereby speeding up the process of adding price alerts.



• **Candle/Heikin-Ashi** User Request

When the Hollow option is enabled the body of the Candle and Heikin-Ashi is now colored in the selected Up/Down color.

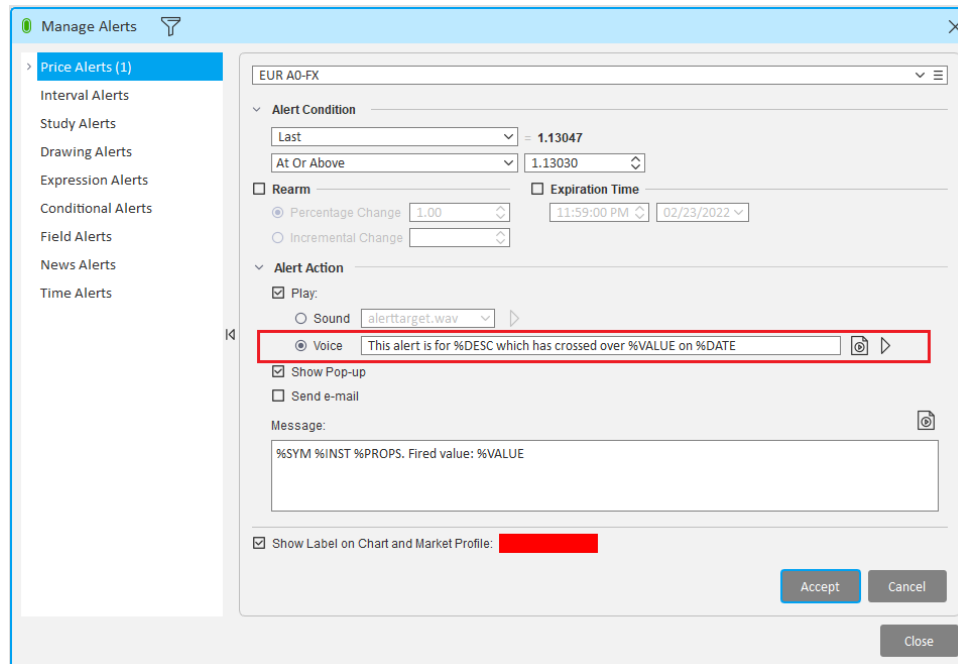


Version	Date
eSignal 21.1	March 2022

Miscellanea

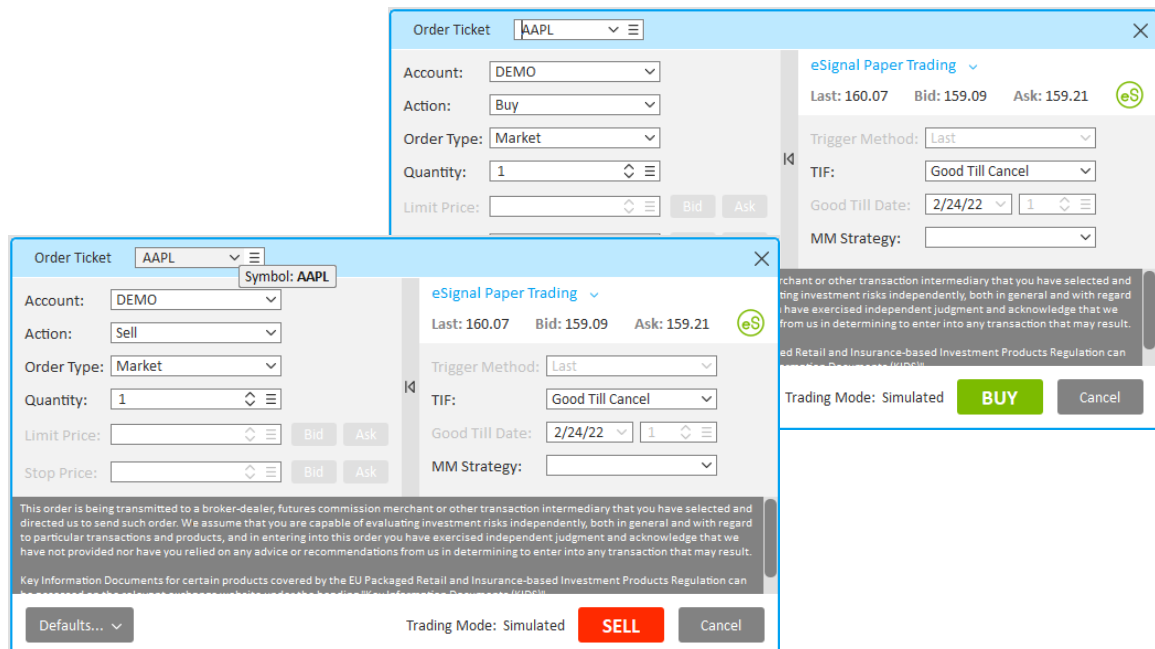
- Alert Action**

In addition to playing Sounds, showing Pop-ups and sending email Messages users now also have the option of creating their own Voice messages which can be applied to all types of alerts (excluding EFS).



- Order Ticket** User Request

The Buy and Sell buttons in the Order Ticket are now colored so as to make their action easily identifiable.



Version	Date
eSignal 21.1	March 2022

Other Enhancements and Fixes

- Redesigned the graphical user interface of the VWAP Calculator.
- Changed the format of the Trades Time column in the Back Testing Report to match that of the chart's Timescale. User Request
- Fixed an issue whereby the Study parameters were omitted in the Data Window.
- Fixed an issue whereby when opening a menu this would at times automatically apply the item directly beneath it.
- Other minor enhancements and fixes.