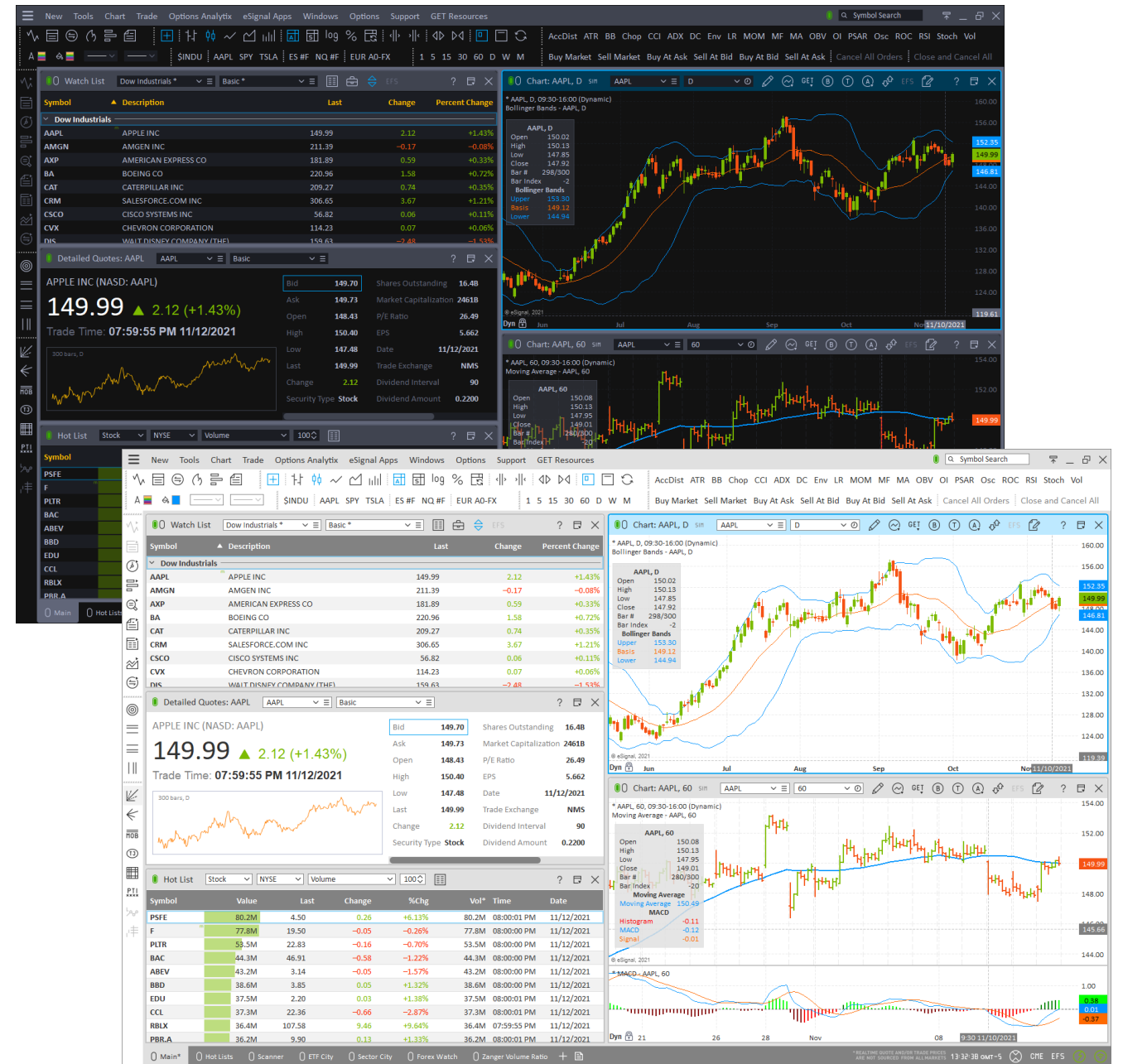


Version	Date
eSignal 21.0	November 2021

eSignal 21.0 introduces several new features and enhancements for active traders and investors. Below is a summary of the new features, enhancements, and important bug fixes. For more detailed information about any of these features please visit the [eSignal KnowledgeBase](http://kb.esignal.com) (kb.esignal.com).

eSignal 21 – A Fresh New Look

From the main menu, to each icon, to the color palettes used throughout each window and dialog of the application, we have redesigned the graphical interface of eSignal 21 to offer a very modern and fresh experience that is visually more intuitive and offers better focus on the tasks at hand. In addition to the new look, we have also been refactoring the codebase with the objective of improving the application's overall performance and efficiency while preserving its functionality.



Version	Date
eSignal 21.0	November 2021

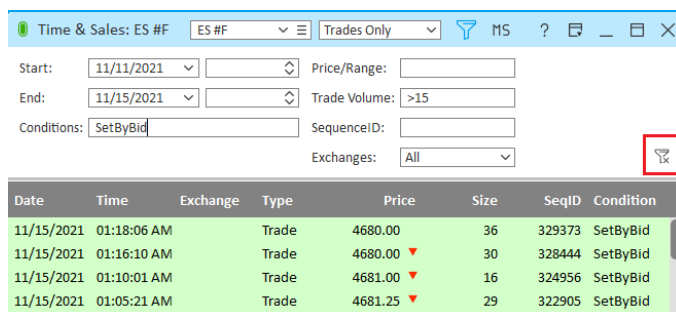
Shell

- Aero Snap**
 eSignal 21 now implements the Windows Aero Snap functionality. This means that users can position the application window – or any of its components such as pages or windows when these are detached - to any side or corners of the monitor either by dragging the window to the specific position or by using the Winkey+Up/Down/Right/Left arrows



Also implemented is the Aero Shake functionality which minimizes all windows except the one being “shaken”.

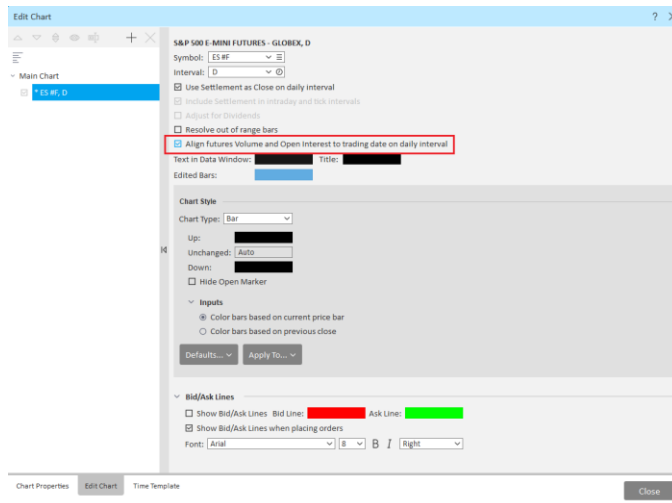
- Reset Filter**
 We have now added a Reset Filter button to all filter panels used throughout the application which allows to quickly clear the filtering contents with a single click



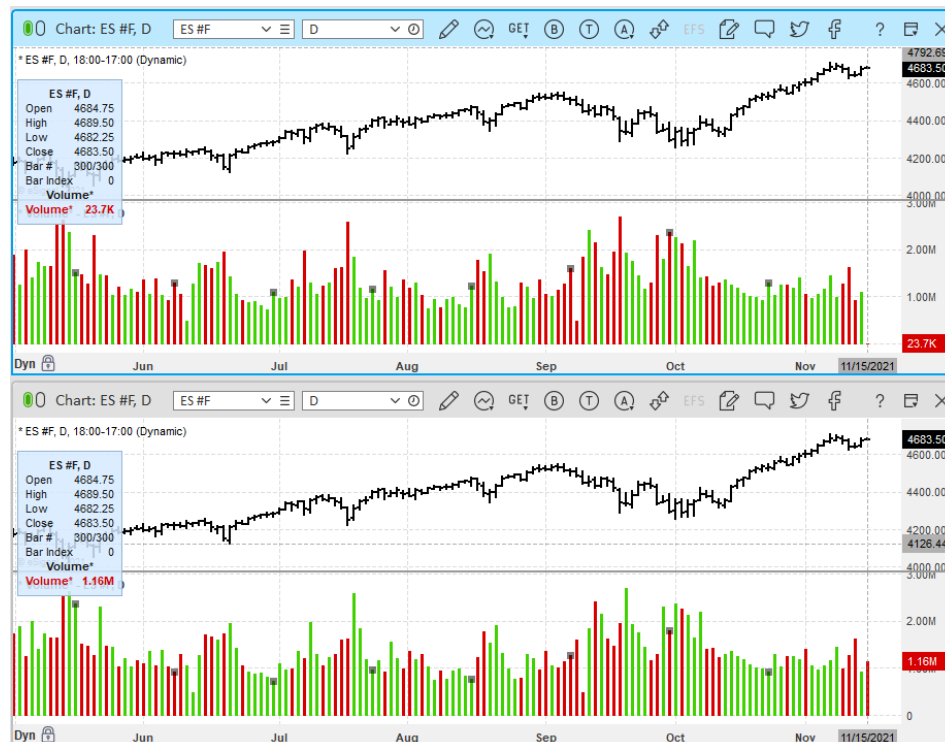
Version	Date
eSignal 21.0	November 2021

Chart

- Added an option to align daily futures Volume and Open Interest to trading date**
 On some futures eSignal has historically adopted the traditional method of displaying the daily Volume and Open Interest one day late (for more information on this topic see article 1413 in the [eSignal KnowledgeBase](#)).
 In eSignal 21 we now offer users the option to align the daily futures Volume and Open Interest to the trading date (where applicable).

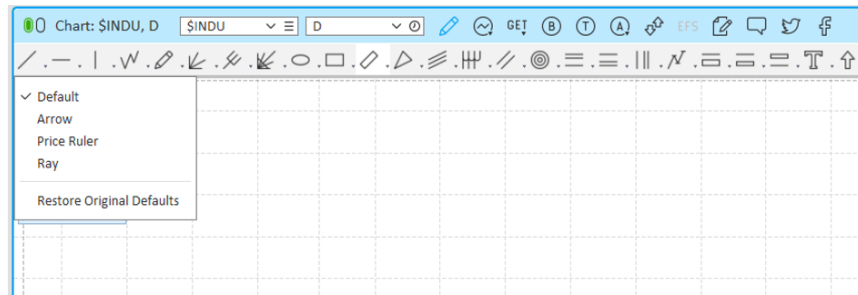


An additional benefit of this option is that when this option is selected the Volume on the current bar is real time Volume (as can be seen in the top chart in the following image where the Volume is aligned to the trading date)



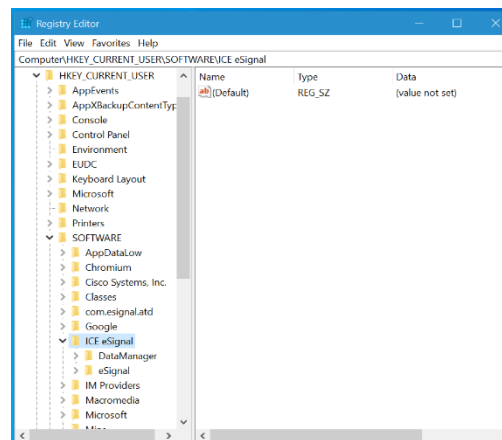
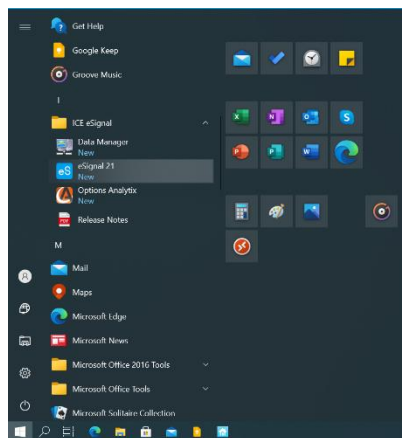
Version	Date
eSignal 21.0	November 2021

- Added extended left mouse click option to Drawing Tool icons in the Drawing Panel**
 It is now possible to display the templates of any one of the Drawing Tools simply with an extended click of the left mouse button (previously one had to either select the small arrow in the right bottom corner of the icon or right click the icon)

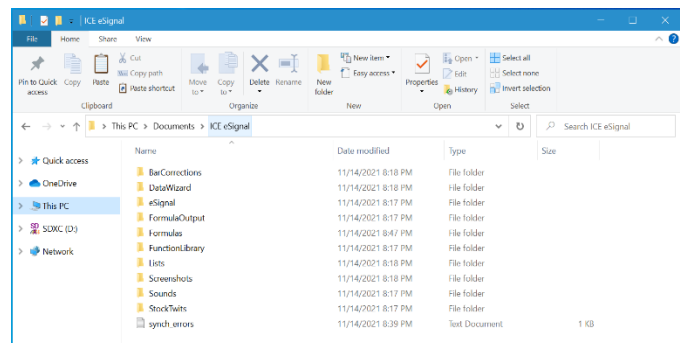


Miscellanea

- ICE eSignal folder(s)**
 Starting with eSignal 21 the application's folders (in Start menu, Documents, Registry) is ICE eSignal.



When upgrading from a prior version of eSignal (12.16 and earlier) the installer will copy all the contents from the previous installation's folders (Interactive Data) to the corresponding ICE eSignal folder. This ensures that all existing data remains intact and in the proper location(s) in case a user needs to reinstall a version prior to eSignal 21.



Version	Date
eSignal 21.0	November 2021

Other Enhancements and Fixes

- Updated Options Analytix.
- Updated Larry Williams COT Indicators.
- Updated the eSignal default pages.
- Added Study Collection to the context menu of the Chart when in Tabular Mode.
- Optimized the Trade Log functionality.
- Resolved an issue where the application could freeze when changing symbols.
- Resolved an issue where the application could freeze at market open.
- Resolved an issue where the Limit price in a StopLimit order would not adjust when changing the Stop price.
- Resolved an issue where values of a Comment field were incorrectly sent through symbol linking when clicking on the Spacebar.
- Other minor enhancements and fixes.