

Version	Date
eSignal 12.7	May 2017

eSignal 12.7 introduces several new features and enhancements for active traders and investors. Below is a summary of the new features, enhancements and important bug fixes. For more detailed information about any of these features please visit the [eSignal KnowledgeBase](http://kb.esignal.com) (kb.esignal.com).

New Features

The following list highlights new features introduced in eSignal 12.7

Shell

- 4K compatibility**
 eSignal 12.7 has now been redesigned to appropriately auto-scale when running on high resolution monitors up to and including 4K.



eSignal 12.6



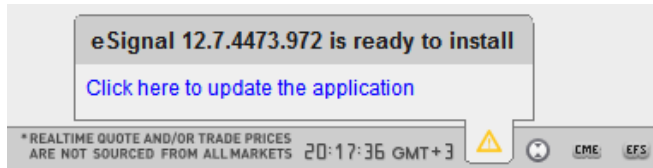
eSignal 12.7

Version	Date
eSignal 12.7	May 2017

- Update process improvements**

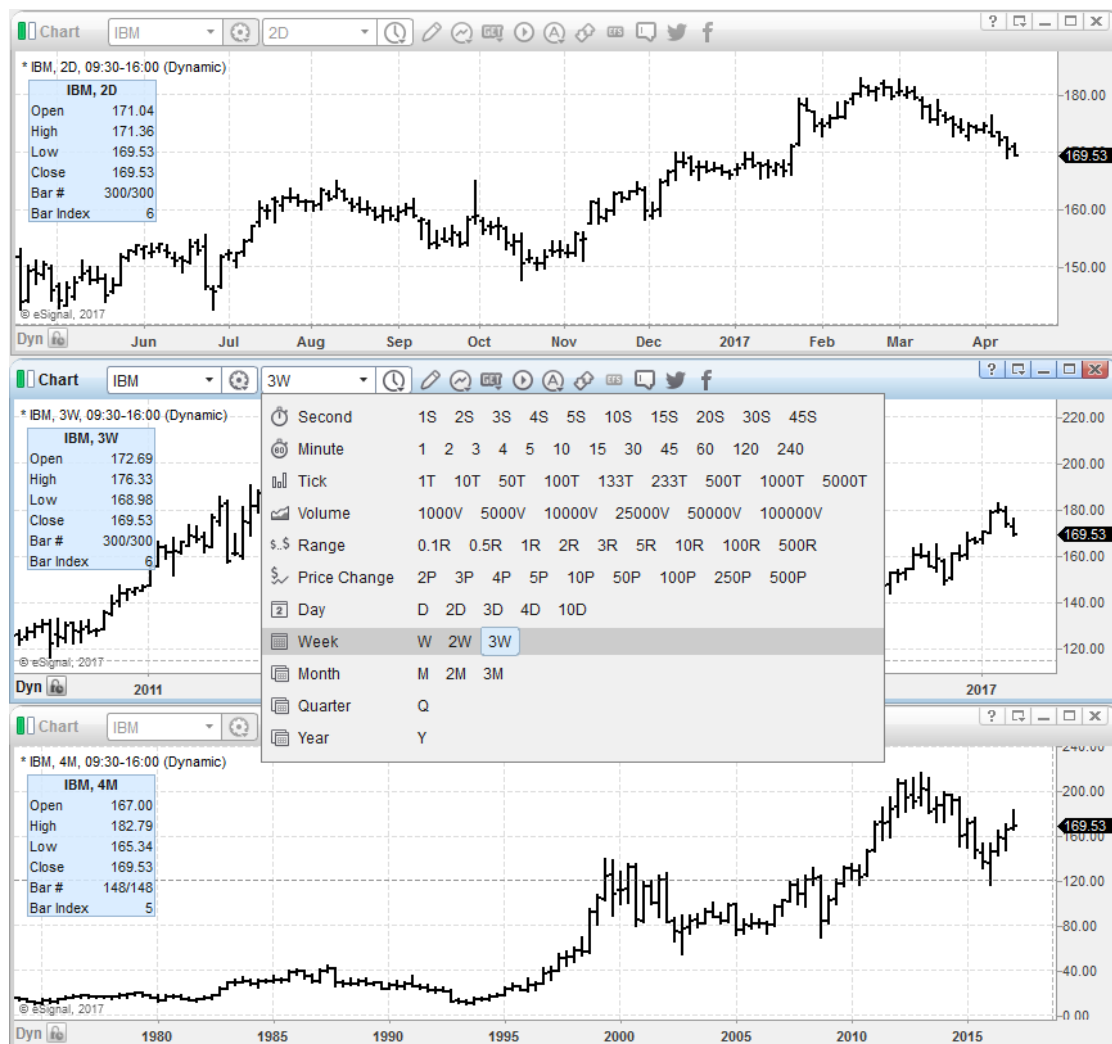
Starting with version 12.7 we have simplified and improved the user experience when updating the application.

When a new version is available, eSignal will automatically download it in the background and have it ready to be installed upon notification and approval from the user.



- Custom DWM Intervals**

As of 12.7 it is now possible to chart custom Daily, Weekly and Monthly interval bars. These are bars that are composed of more than one day, week or month (e.g. 2D, 3W or 4M) up to the equivalent number of days, weeks or months contained in a year.



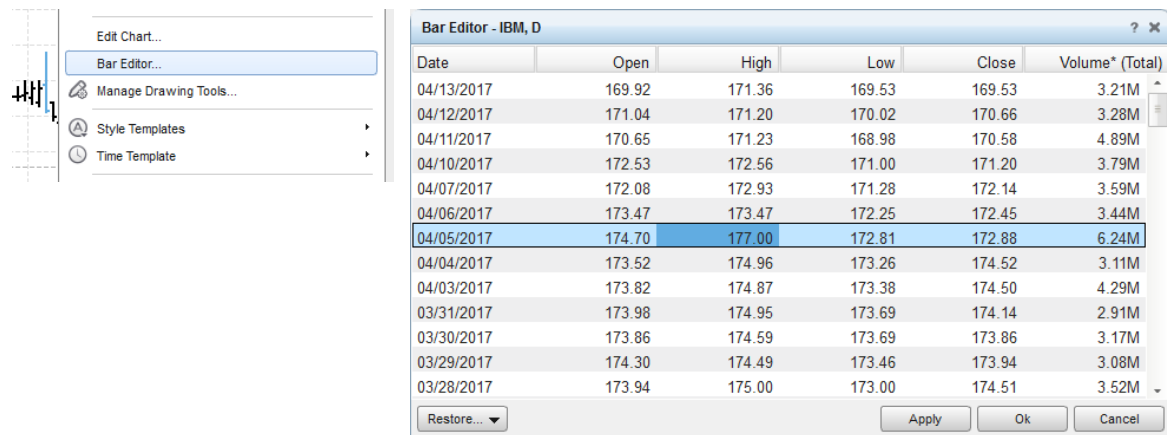
Version	Date
eSignal 12.7	May 2017

Chart

- Bar Editor**

There are times when users need to adjust a questionable price in a chart (for example a High or Low spike) while waiting for this to be resolved server-side. There are also times when users may simply want to adjust a value of a bar that may not necessarily be incorrect, but that impacts a study in an undesirable way. To this purpose, we have now re-introduced in version 12.7 the Bar Editor which enables a user to modify the OHLCV values of any bar in a chart.

In doing so we have added a few visual and usability enhancements to the tool. Edited bars and the specific edited values are now clearly highlighted in the Bar Editor dialog and it is now possible to restore with a single click the original values in multiple selected rows or all rows.

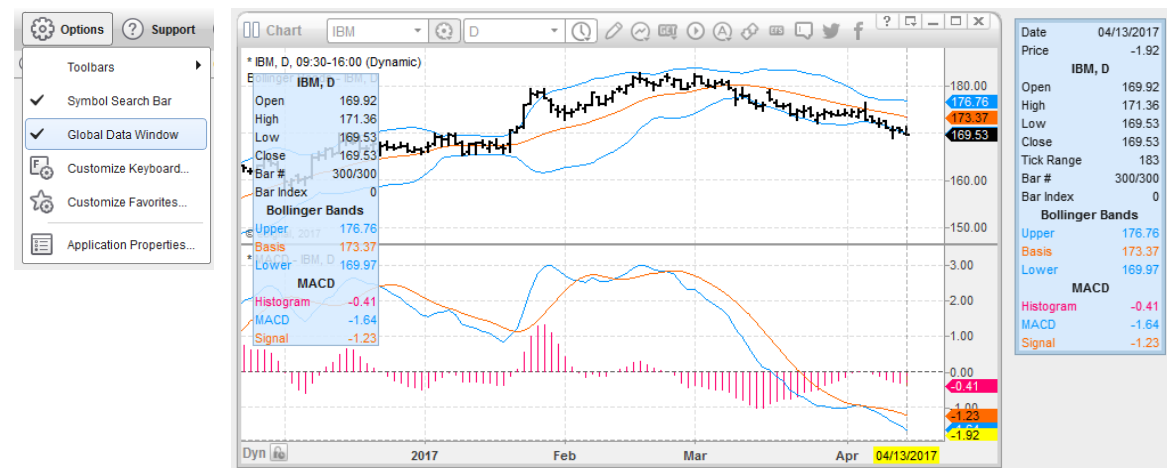


- Global Data Window**

The Global Data Window is a separate Data Window that can be placed anywhere on the user's desktop and that replicates the localized Data Window of the chart on which the mouse cursor is hovering regardless of whether the localized Data Window is displayed or hidden.

This way a user can remove the localized Data Window from one or more charts yet still be able to see the contents of that chart in the Global Data Window.

In addition, we have also made it possible for the user to have some specific fields available in the Global Data Window even if they are not enabled on the localized Data Window(s)



Version	Date
eSignal 12.7	May 2017

Watch List / Dashboard

- Portfolio Subtotals**

Users now have the option to add Subtotals to the subgroups specifically defined as such in the Watch List or Dashboard when these windows are set to Portfolio mode.

The screenshot shows the 'Watch List Properties' dialog box with the 'Trading Default Connections' section. The 'Watch List Portfolio' radio button is selected, and the 'Show Total Row' and 'Show Subtotal Rows' checkboxes are checked. Below the dialog box is the 'Watch List' window, which displays a table of stock data. The table has columns for Symbol, Last, Average Price, Quantity, Market Value, Open PL, %Return, Cost, and Gain. The data is organized into subgroups, with a 'Cash' row at the bottom.

Symbol	Last	Average Price	Quantity	Market Value	Open PL	%Return	Cost	Gain
Subgroup1								
IBM	169.53	168.53	100	\$16953.00	\$100.00	+0.59%	\$16853.00	1.00
INTC	35.25	34.75	100	(\$3525.00)	(\$50.00)	-1.44%	(\$3475.00)	-0.50
				\$13428.00	\$50.00	+0.25%	\$13378.00	
Subgroup2								
AAPL	141.05	140.55	100	(\$14105.00)	(\$50.00)	-0.36%	(\$14055.00)	-0.50
KO	42.79							
				(\$14105.00)	(\$50.00)	-0.36%	(\$14055.00)	
Subgroup3								
DIS	113.20	112.20	100	\$11320.00	\$100.00	+0.89%	\$11220.00	1.00
				\$11320.00	\$100.00	+0.89%	\$11220.00	
Cash: \$9894								
				\$10643.00	\$100.00	+0.22%	\$10543.00	

Other Enhancements and Fixes

- Updated Harmonic Pattern Collection
- Updated ATM Power Screener by Viratech
- Updated EFS engine to SpiderMonkey version 48
- Added new macros to the Rename functionality of some windows
- Symbol lists exported from QCharts can now be inserted in grid-based windows
- Fixed an issue where the comment rows of imported lists were rendered in upper case
- Fixed an issue where the Volume fields could be missing from the available fields in Market Screener Plus
- Fixed an issue where the Symbol and Interval could be duplicated in the name of some windows when minimized
- Other minor fixes