

Version	Date
eSignal 12.12	September 2019

eSignal 12.12 introduces several new features and enhancements for active traders and investors. Below is a summary of the new features, enhancements and important bug fixes. For more detailed information about any of these features please visit the [eSignal KnowledgeBase](http://kb.esignal.com) (kb.esignal.com).

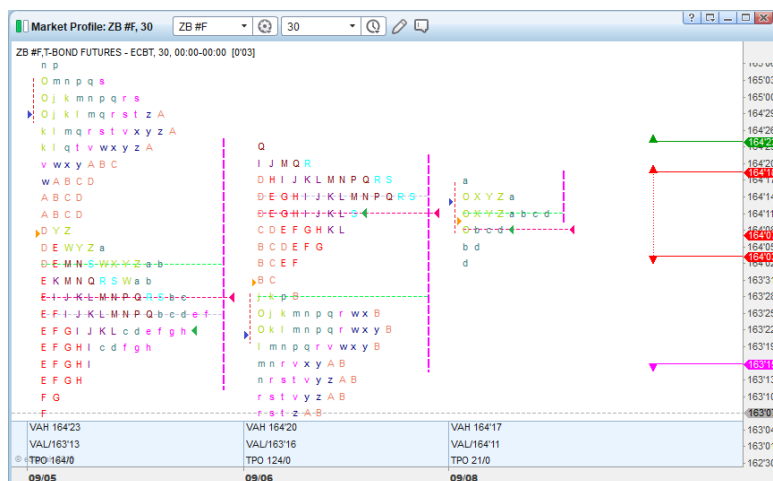
New Features and major enhancements

The following list highlights new features and major enhancements introduced in eSignal 12.12

Market Profile ^{RT}

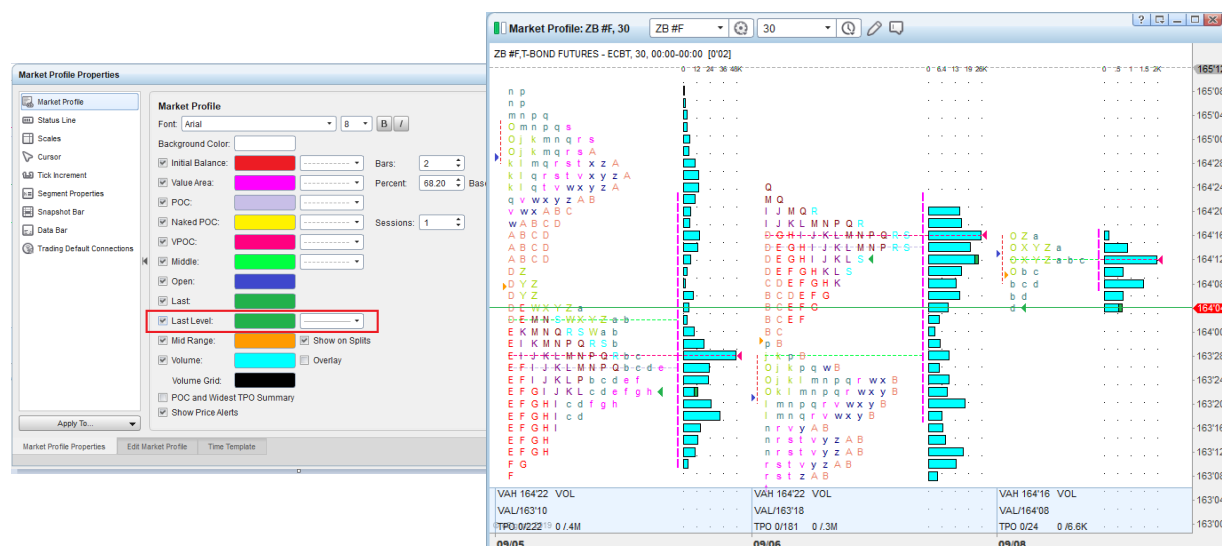
- **Added option to display Price Alerts on Market Profile**

Users now have the option to display and edit (through click and drag) Price Alerts directly in the Market Profile window itself. In addition to displaying the Price Alerts on a Market Profile, users can also choose whether to display the labels for these Alerts on the Price Scale.



- **Added option to display Last as a Horizontal line**

In addition to being able to display the Last as a marker in the Market Profile, users can now also select to display the Last as a horizontal line that spans the entire Market Profile window.



Version	Date
eSignal 12.12	September 2019

Built-in Studies

- Directional Trend Index**

Developed by William Blau, the Directional Trend Index indicator uses the High/Low Momentum to calculate the increasing momentum of the Highs in an up market and the decreasing momentum of the Lows in a down market. The DTI slope additionally provides the direction of the market or security.



- Ergodic MACD**

Developed by William Blau the Ergodic MACD indicator is an evolution of the MACD oscillator. Up trends can be identified when the Signal line crosses above the Ergodic MACD and down trends when it crosses below. The strength of these trends is further defined by the regions above and below the zero line.



- Ergodic TSI**

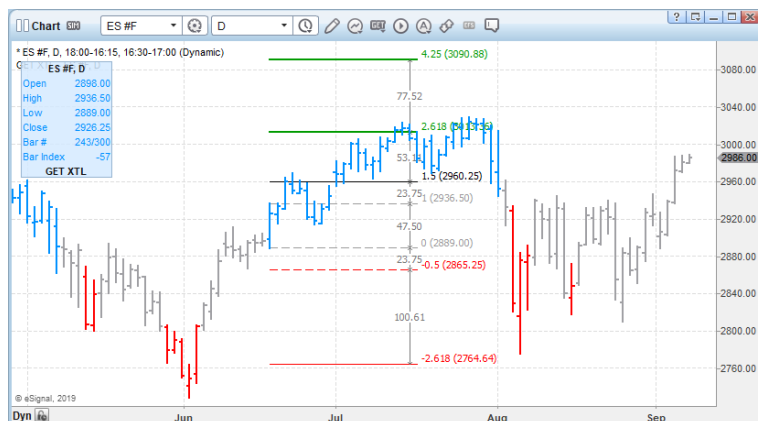
Developed by William Blau, the Ergodic True Strength Index is a momentum oscillator based on a double smoothing of price changes. As such, the Ergodic TSI displays the ebbs and flows of price action with a steadier line that effectively filters out noise. As with most momentum oscillators, the Ergodic TSI can provide signals from overbought/oversold readings, centerline crossovers, bullish/bearish divergences and signal line crossovers.



Drawing Tools

- XTL Breakout** [GET](#)

The XTL Breakout is a new drawing tool, derived from the Fib Extension, that allows a user to single click any XTL colored bar and instantly draw the breakout, target, stop and reversal levels calculated on that bar based on the XTL (default) or user defined strategy.

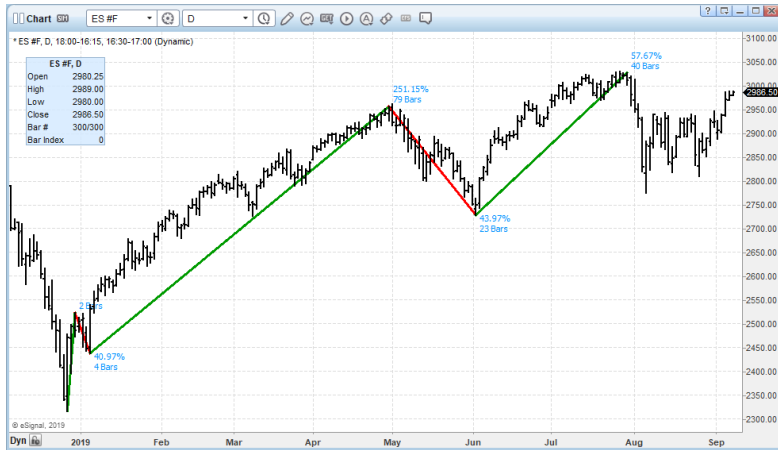


Version	Date
eSignal 12.12	September 2019

• **Swing Ruler**

The Swing Ruler is a new drawing tool, functionally similar to the Polyline, that allows a user to measure the retracements and extensions of any number of consecutive swings in a trend (each swing being a move in the opposite direction to the prior swing). The retracements are calculated based on the prior swing in the opposite direction and the extensions are calculated based on the prior swing in the same direction

For each swing the tool can display the percentage of the retracement or extension, its price change and distance (i.e. number of bars).



• **Added option to set a Drawing Tool as default for a symbol**

This feature will allow a user to associate specific drawing tools on a chart as defaults for the related symbol. Once a drawing tool is assigned as a default it will be drawn on any new chart for that symbol. User then have the option to view and manage all the defaults from within the Default Drawing Tools dialog that can be accessed in the Tools menu

Symbol	Type	Title	Anchor Start Time	Start Price	Anchor End Time	End Price	Last Modified
ES #F	—	Horizontal Line	12:00:00 AM 08/12/2019	2980.93	12:00:00 AM 08/12/2019	2980.93	12:23:31 AM 09/09/2019
ES #F	—	Trend Line	12:00:00 AM 08/06/2019	2775.75	12:00:00 AM 10/02/2019	2876.27	12:23:41 AM 09/09/2019
ES #F	≡	Fibonacci Retracement	12:00:00 A				11 AM 09/09/2019
ES #F	■	Highlight	12:00:00 A				10 AM 09/09/2019
ES #F	↑	Arrow Up	12:00:00 A				11 AM 09/09/2019
ES #F	↓	Arrow Down	12:00:00 A				09 AM 09/09/2019
ES #F	T	Text	12:00:00 A				11 AM 09/09/2019
ES #F		Vertical Line	12:00:00 A				08 AM 09/09/2019

Version	Date
eSignal 12.12	September 2019

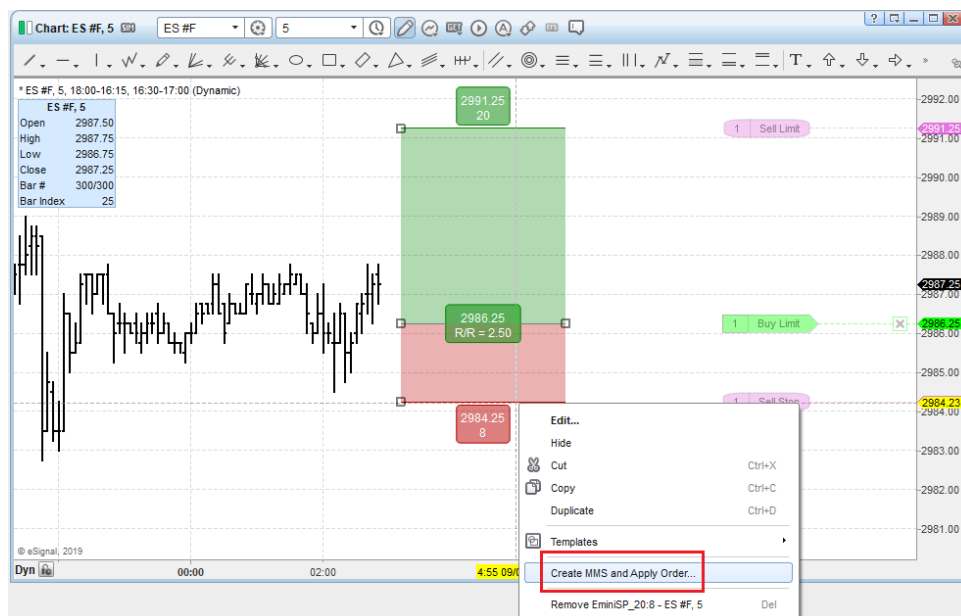
- **Added actual Value to Trend Line, Mini Price Cursor and Data Window**

This enhancement allow a user to display the actual value (based on the Point Value of the security) of the difference between the two end points of a Trend Line (or two successive clicks of the Cursor) .



- **Added option to directly generate trading orders based on the Reward/Risk drawing tool.**

This feature allow a user to generate a set of trading orders (Entry, Stop Loss and Stop for Profit) based on the levels determined when using the Reward/Risk drawing tool.

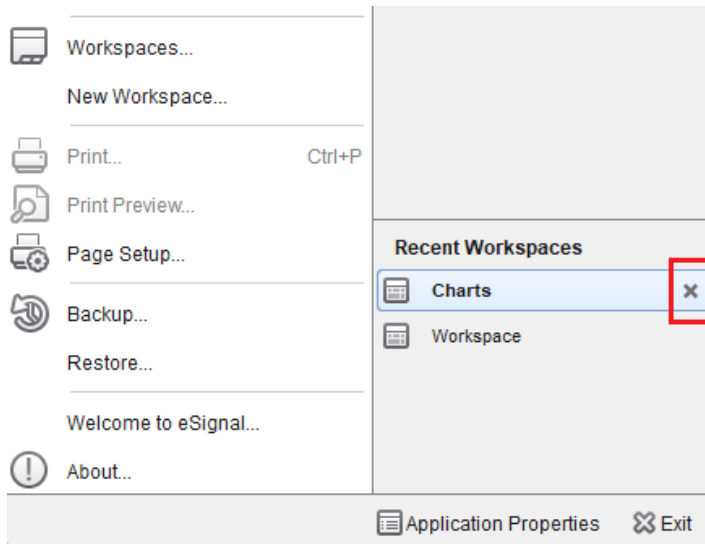


Version	Date
eSignal 12.12	September 2019

Shell

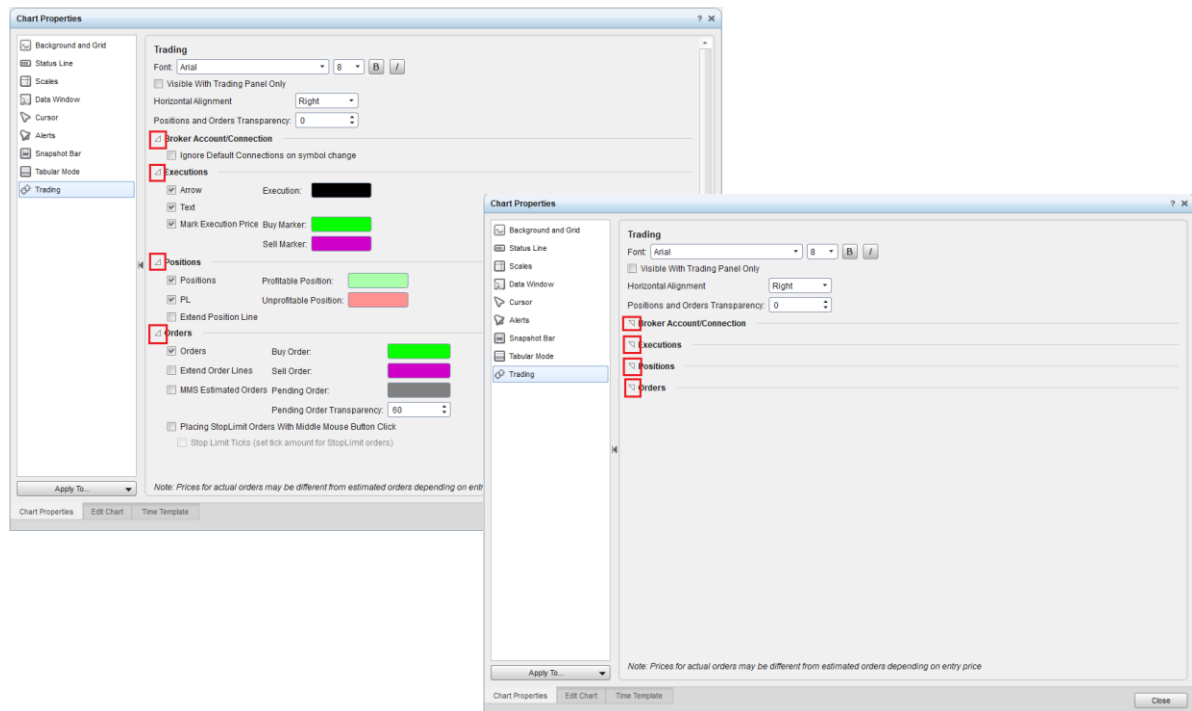
- **Added option to remove Workspaces**

This enhancement allow a user to remove a Workspace directly from within the eS menu (similar to what can be done with Pages)



- **Added option to collapse sections of dialogs**

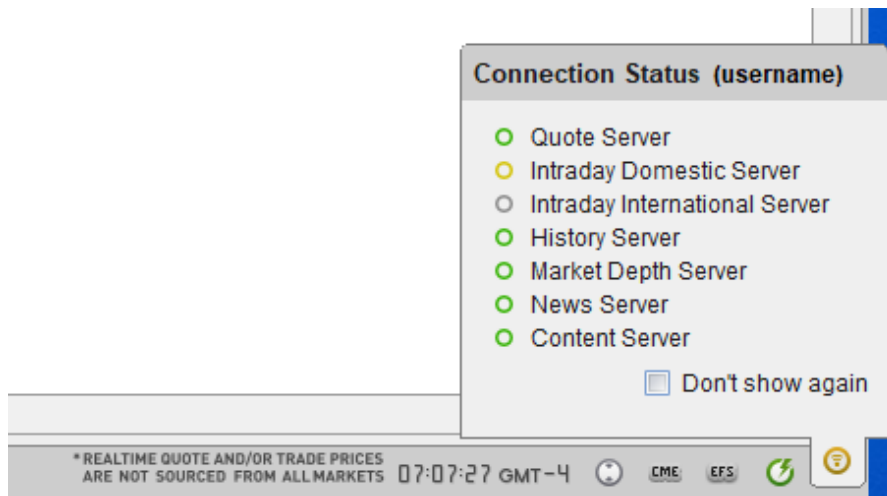
Many of the dialogs now have collapsible sections so as to facilitate navigation



Version	Date
eSignal 12.12	September 2019

- **Added Connection Status pop-up notification**

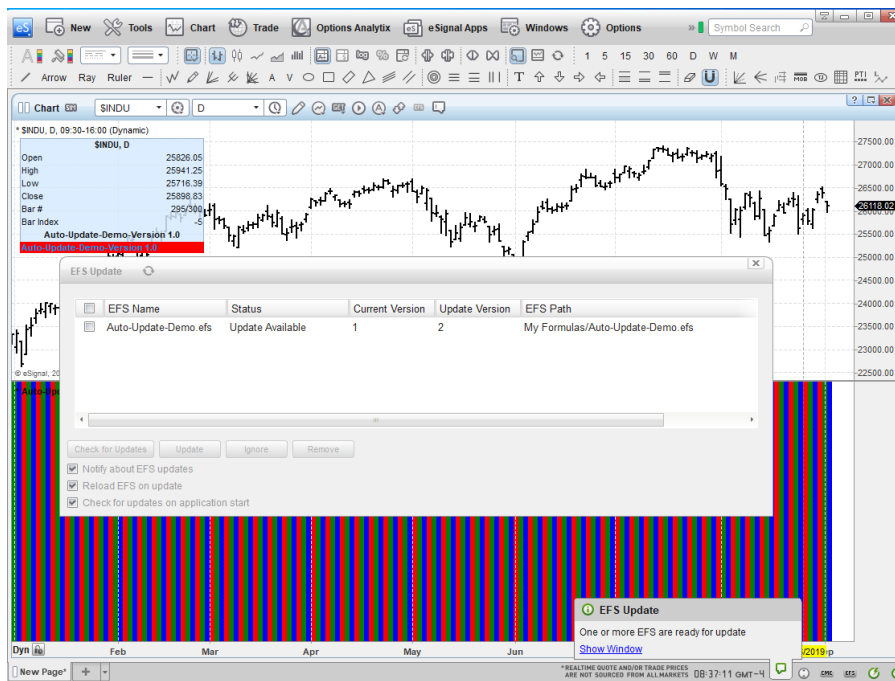
The application now displays a pop-up notification of the Connection Status if the application is unable to connect with the related server within a pre-defined interval (5 seconds) thereby alerting the user of possible connection issues. Users have the option to disable the pop-up notifications for the current session only.



EFS

- **Added option to auto-update EFS formulas**

This functionality is now available in eSignal 12.12 and provides the user with a mechanism to automatically update any EFS or Function Library they may have (that uses the checkversion() function) to the most recent version



Version	Date
eSignal 12.12	September 2019

Other Enhancements and Fixes

- Updated Options Analytix.
- Enhanced the overall functionality of FileShare.
- Added TLS encryption to E-mail widget.
- Symbols with -BQ, -QB and -BT extensions now display the news count of the corresponding symbol (e.g. IBM-BQ displays the Headline Count of IBM). Previously this field was not populated.
- Enhanced the performance of the T&S window specifically when requesting Trades Only.
- The Properties/Alerts tab user selection now persists when cycling through the objects of a Chart. Previously the selection would always revert to Properties by default.
- Added Remove All command in the Broker Manager that allows the removal of all symbols (that do not have open positions or orders) with a single click.
- Fixed an issue where Detached Pages would not save the correct position and/or size after restarting the application.
- Other minor enhancements and fixes.

Notes:

RT – Real Time version only.
GET – Advanced GET only.
EOD – End Of Day version only